

SYMBOLS

- DETAIL OR PLAN NUMBER
DRAWING SHEET NUMBER
- ELEVATION NUMBER
DRAWING SHEET NUMBER
- SECTION NUMBER
DRAWING SHEET NUMBER
- NUMERICAL OR LETTER COORDINATE
(USUALLY COLUMN)
- REVISION NUMBER
REFERS TO REVISION WITH OPTIONAL CLOUD AROUND REVISION
- EXISTING WALL
- EXISTING WALL DEMOLISHED
- NEW WALL
- (E) = EXISTING
(N) = NEW
(ER) = EXISTING RELOCATED
- WINDOW SYMBOL
WINDOW TYPE - NUMBER
OR
X
- DOOR SYMBOL
DOOR TYPE - NUMBER
OR
X
- FIXTURE OR EQUIPMENT SYMBOL AND DESIGNATION
- ROOM NUMBER FOR FINISH SCHEDULE
- KEY NOTE SYMBOL AND NUMBER
- POINT ELEVATION
LOCATION ABBREVIATION

DESIGN CODES:

- UNIFORM BUILDING CODE, 1994 EDITION
- CALIFORNIA BUILDING CODE, 1995 EDITION
- 1994 UMC, 1994 UPC, 1993 NEC
- UNIFORM FIRE CODE, 1994 EDITION
- CAC, T-24 & FEDERAL A.D.A.-ACCESSIBILITY STANDARDS
- CAC, T-24, ENERGY CONSERVATION

BUILDING CONSTRUCTION:

- TYPE I, FIRE RESISTIVE
- TYPE II, FIRE RESISTIVE
- TYPE II, 1-HR
- TYPE II, N
- TYPE III, 1-HR
- TYPE III, N
- TYPE IV, HEAVY TIMBER
- TYPE V, 1-HR
- TYPE V, N

OCCUPANCY: GROUP R-1 A-3

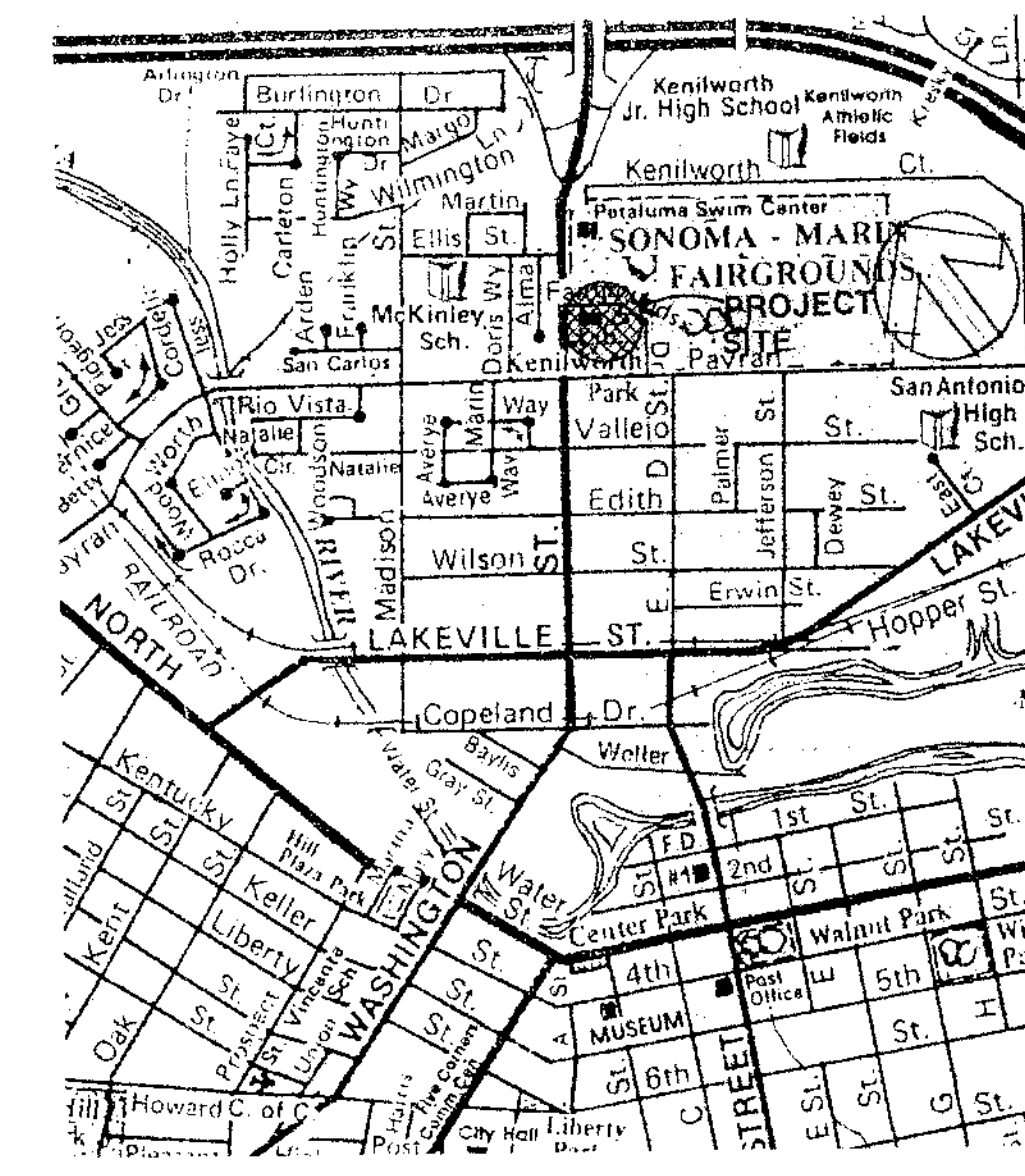
ZONING: R-1-6, 500

AP#: 007-150-031

REMODEL
SQUARE FOOTAGE : 544 sq. ft.

LOCATION PLAN

VICINITY MAP



OWNER:
SONOMA CO. LIBRARY
100 FAIRGROUNDS DRIVE
PETALUMA, CA 94952
707/763-9801

CIVIL ENGINEER:
N / A

STRUCTURAL ENGINEER:
N / A

ELECTRICAL ENGINEER:
DESIGN / BUILD

MECHANICAL ENGINEER:
DESIGN / BUILD

LANDSCAPE ARCHITECT:
N / A

SOILS ENGINEER:
N / A

OWNER/ CONTRACTOR APPROVALS:

OWNER _____ DATE _____

CONTRACTOR _____ DATE _____

AGENCY APPROVALS:

INDEX TO DRAWINGS

- T1 TITLE SHEET
- HC-1 ACCESSIBILITY DETAILS & NOTES
- A-2.1 FLOOR PLAN, REF. CLG. PLAN
- A-3.1 INT. ELEVATIONS, ROOM FINISH SHED.
- A-4.1 ARCHITECTURAL DETAILS

ABBREVIATIONS

AB. Anchor Bolt	LAM. Laminate
AC. Asphalt Concrete	LAV. Lavatory
AD. Area Drain	LAG. Lag Screws
ADJ. Adjustable	LLV. Long Leg Vertical
ADJCT. Adjacent	LLH. Long Leg Horizontal
AGGR. Aggregate	LT. Light
AFF. Above Finished Floor	MAX. Maximum
ALT. Alternate	M.B. Moisture Barrier
ALUM. Aluminum	M.C. Medicine Cabinet
ANG. Angle	M.E.C.H. Mechanical
APPROX. Approximate	M.E.M.B. Membrane
AUN. Auning	MFR. Manufacturer
AT. At	MIN. Minimum
BD. Board	MIR. Mirror
BITUM. Bituminous	MISC. Miscellaneous
BLDG. Building	MLDG. Molding
BLK. Block	M.O. Masonry Opening
BM. Beam	M.R. Moisture Resistant
BTUN. Butane	M.T. Metal Threshold
CAB. Cabinet	MTP. Mounted
CB. Catch Basin	NA. Not In Contract
CBM. Cement	NOM. Nominal
CER. Ceramic	NTS. Not To Scale
CJ. Cast Iron Piping	OB. Obsolete
CJ. Control Joint	OC. On Center
CJ. Ceiling Joist	OD. Outside Diameter
CL. Center Line	OH. Overhang, Overhead
CLG. Ceiling	OPNG. Opening
CLG.C. Ceiling	P. Pole
CLO. Closet	P. & S. Pipe and Scaff.
CLR. Clear	P.D. Perforated Drain
CNTR. Counter	P.D.F. Powder Driven Fastener
C.O. Clean Out	PKT. Pocket
C.O. Casse Opening	PEN. Penetration
C.O. Column	PE. Plywood Edge Nail
CONC. Conc.	P.G. & E. Pacific Gas & Electric
CONT. Continuous	PGE REP. Pacific Gas & Electric Representative
C.T. Ceramic Tile	PL. Plaster
CTR. Center	PLAB. Plastic Laminate
CTBK. Countertop	PLY. Plywood
CWL. Cold Water	PLYWD. Plywood
DBL. Double	PNT. Paint
DET. Detail	PT. Point
DIA. Diameter	P.T.D. Paper Towel Dispenser
DN. Down	QT. Quarry Tile
DO. Do Over, Ditto	R. Radius
DR. Door	R/RAD. Return Air Register
DB. Down Spout	R.D. Roof Drain
DUL. Dish Washer	RFR. Refrigerator
DWG. Drafting	REF. Refrigerator
(E) Existing	RENF. Reinforced
EA. Each	REQD. Required
EL. Elevation	RET. Retaining
ELEC. Electrical	RJ. Roof Joist
ELEC. Electrical Panel	R.O. Room
EQ. Equal	R.O. Rough Opening
EW. Each Way	RWD. Redwood
EXH. Exhaust	RWL. Rain Water Leader
EXIST. Existing	S.A.R. Supply Air Register
EXP. Expansion	S.C. Solid Core
FALL. Forced Air Unit	SCHED. Schedule
FB. Flat Bar	S.D. Smoke Detector
FD. Floor Drain	SECT. Section, Sectional
FDN. Foundation	S.F. Square Feet
FG. Fiberglass	SH. Shelf, Single Hung
FN. Finish, Finished	SHR. Shower
FE. Fine Extinguisher	SH. Sheet
FJ. Floor Joist	SH. Sill
FLR. Floor	SL. Slicing
FLABH. Fluorescent	SP. Specification
FLQR. Face of Stud	SQ. Square
FTG. Footing	S.S. Sanitary Sewer
FURR. Furring, Furred	S.S.D. See Structural Drawings
G. Gas	S.S.T. Stainless Steel
GA. Gage	STD. Standard, Stud
GAL. Galvanized	STL. Steel
G.C.O. Grade Clean Out	STR. Structural
G.D. Garbage Disposer	STR. Shear Wall
G.F.I. Ground Fault Interrupt	T. Thread, Treads
GL. Glass	TAB. Top and Bottom
GL. Galvanneal	T&G. Tongue and Groove
GR. Grade	T.B. Towel Bar
G&M. Galv. Sheet Metal	T.D. Tie Down
GTF. Gypsum	TH. Threshold
HB. Hose Bibb	TK. Thick
H.C. Hollow Core	T.L. Tight Line
H.D. Hold Down	T.O. Top of
HDR. Header	TPH. Toilet Paper Holder
HDR. Hardwood	T.S. Tube Steel
HGT. Height	TV. Typical
HORIZ. Horizontal	UNF. Unfinished
HR. Handrail, Hour	UNF. Unless Otherwise Noted
H.S. Horizontal Sliding	V. Vent
HTR. Heater	V. Vertical
ID. Inside Diameter	V.B. Vent From Below
INSUL. Insulation	V.T.R. Vent Through Roof
JL. Joist	W. Without
JST. Joist	W/O. Wood
JH. Joist Hanger	W/P. Waste Pipe From Below
JT. Joint	W.H. Water Heater
KIT. Kitchen	W.P. Weather Protected
KB. Kitchen Sink	W.P. Waterproof
	W.S. Weather Stripping
	WT. Weight
	WWT. Welded Wire Mesh

TESTS AND INSPECTIONS

- COMPACTED FILL
- FILL MATERIAL, ACCEPTANCE TESTS
 - COMPACTION CONTROL, CONTINUOUS
 - COMPACTION TESTS ONLY AS ORDERED
 - BEARING CAPACITY OF COMPACTED FILL
- REINFORCING STEEL
- SAMPLE AND TEST BAR STEEL
 - SAMPLE AND TEST MESH
 - INSPECT PLACING AT JOB
- STRUCTURAL STEEL
- SAMPLE AND TEST AS DIRECTED
 - SHOP FABRICATION INSPECTION
 - FIELD ERECTION INSPECTION
 - INSPECTION OF WELDS - SHOP
 - INSPECTION OF RIVETING AND BOLTING - SHOP
 - INSPECTION OF RIVETING AND BOLTING - FIELD
 - SAMPLE AND TEST HIGH STRENGTH BOLTS AND WASHERS
- BRICK AND BLOCK
- SAMPLE AND TEST
 - TEST ONLY
 - INSPECTION OF PLACING
 - CORE DRILL SAMPLES
- GLUE LAMINATED STRUCTURAL TIMBER
- FABRICATION INSPECTION
 - SAMPLE AND TEST STEEL ACCESSORIES
 - INSPECT FABRICATION OF STEEL ACCESSORIES
 - CORE DRILL SAMPLES
- CONCRETE GUNITE GROUT MORTAR
- TEST OF AGGREGATES FOR MIX DESIGN ONLY
 - SUITABILITY TESTS OF AGGREGATES AS DETAILED BELOW
 - MIX DESIGNS
 - CONTINUOUS BATCH PLANT INSPECTION
 - INSPECT PLACING
 - SAMPLE
 - COMPRESSION TESTS
 - PICK UP SAMPLES AT JOB
 - SAMPLES DELIVERED TO LABORATORY
 - DELIVER SAMPLE FORMS TO JOBSITE
 - SAMPLE AND TEST CEMENT
 - SUITABILITY: SODIUM SULPHATE
 - SUITABILITY: STRUCTURAL STRENGTH
 - SUITABILITY: LOS ANGELES RATTLER
 - SUITABILITY: CLAY (HYDROMETER METHOD)
 - SUITABILITY: REACTIVITY TESTS
 - SUITABILITY: VOLUME CHANGE
- OTHER SPECIAL INSPECTIONS
- GRADING, EXCAVATION AND FILL:
 - PILING, DRILLED PIERS, CAISSONS:
 - PRESTRESSED STEEL:
 - CONCRETE FRAMES, DUCTILE MOMENT-RESISTING:
 - MASONRY:
 - WELDING:
 - WELDING OF DUCTILE MOMENT-RESISTING FRAMES:
 - GYPSUM CONCRETE:
 - INSULATING CONCRETE FILL:
 - SPRAY APPLIED FIRE PROOFING:
 - EPOXY FOR STRUCTURAL BOLTS/RODS:
- ADDITIONAL COMMENTS/NOTES:

TITLE 24 ACCESSIBILITY AND A.D.A. COMPLIANCE
THROUGH SIGNATURE OF THE CONTRACT FOR CONSTRUCTION, THE OWNER AND CONTRACTOR AGREE TO CONSTRUCT ALL WORK WITHIN THE PROJECT SCOPE IN CONFORMANCE WITH THE REQUIREMENTS OF TITLE 24 OF THE C.A.C. AND THE AMERICANS WITH DISABILITIES ACT, WHETHER OR NOT EVERY REQUIREMENT IS NOTED IN THE DRAWINGS. WHERE THE SCOPE OF WORK TO BE PERFORMED IN EXISTING BUILDINGS OR ON EXISTING SITES DOES NOT INCLUDE THE CORRECTION OF EVERY PHYSICAL CONDITION WHICH MAY BE REQUIRED BY THESE LAWS, BY SIGNATURE OF THE CONTRACT FOR CONSTRUCTION, THE OWNER AND THE CONTRACTOR AGREE TO INDEMNIFY AND HOLD HARMLESS THE ARCHITECT AGAINST ANY COMPLAINTS OR CLAIMS WHICH MAY ARISE AS A RESULT OF NOT BRINGING ALL ASPECTS OF THE BUILDING AND SITE INTO FULL COMPLIANCE WITH THE LAW.

SELECTION OF NON-SPECIFIED ITEMS
WHERE NO SPECIFICATION IS PROVIDED FOR PRODUCTS OR MATERIALS REASONABLY CONSIDERED TO BE WITHIN THE SCOPE OF THE WORK, IT SHALL BE THE RESPONSIBILITY OF THE CONTRACTOR TO SELECT PRODUCTS AND MATERIALS OF HIGH QUALITY AND DURABILITY CONSISTENT WITH THE DESIGN DRAWINGS FOR APPROVAL BY THE ARCHITECT PRIOR TO INSTALLATION AND TO INSTALL ALL PRODUCTS AND MATERIALS IN CONFORMANCE WITH THE HIGHEST INDUSTRY PRACTICES AND STANDARDS. THE ARCHITECT SHALL HAVE THE AUTHORITY TO DETERMINE THE ACCEPTABILITY OF ANY PRODUCT OR MATERIAL AND THE QUALITY OF WORKERSHIP AT ANY TIME. SHOULD THE ARCHITECT DETERMINE THAT ANY PRODUCT, MATERIAL OR LEVEL OF WORKERSHIP TO BE UNACCEPTABLE, THE CONTRACTOR SHALL CORRECT OR REPLACE THE WORK AT NO COST TO THE OWNER OR THE ARCHITECT.

DESIGN / BUILD SERVICES :

WHERE BUILDING SYSTEMS, EQUIPMENT OR CABINETS ARE NOTED ON THE DRAWINGS TO BE "DESIGN / BUILD", THE CONTRACTOR SHALL PROVIDE ALL NECESSARY SYSTEM DESIGN BY A QUALIFIED, APPROPRIATELY LICENSED DESIGN PROFESSIONAL, INCLUDING ALL DRAWINGS AND CALCULATIONS NECESSARY TO FULLY EXPLAIN AND CONSTRUCT THE SYSTEM OR EQUIPMENT AND TO OBTAIN THE REQUIRED PERMITS AND REGULATORY APPROVALS. PRODUCT INFORMATION, PRELIMINARY DRAWINGS, SHOP / CONSTRUCTION DRAWINGS AND CALCULATIONS SHALL BE SUBMITTED TO THE ARCHITECT FOR REVIEW PRIOR TO SUBMITTAL FOR APPROVAL BY REGULATORY AGENCIES AND FABRICATION IN ACCORDANCE WITH SECTION 1900 OF THE SPECIFICATIONS BOOK. ALL COSTS FOR DESIGN, APPROVAL AND INSTALLATION SHALL BE INCLUDED IN THE CONTRACT PRICE. WHERE SUCH WORK IS TO BE PERFORMED ON A "TIME AND MATERIALS" BASIS AS SPECIFICALLY NOTED IN THE OWNER / CONTRACTOR CONSTRUCTION AGREEMENT, THE CONTRACTOR SHALL SUBMIT A COST ESTIMATE OF FEES FOR DESIGN AND CONSTRUCTION TO THE ARCHITECT FOR REVIEW AND THE OWNER FOR APPROVAL PRIOR TO COMMENCING WORK.

- CHECK SET
- NOT FOR CONSTRUCTION
- PLAN CHECK SET
- FOR AGENCY APPROVAL
- BID SET
- SUBJECT TO PERMIT
- CONTRACT SET
- FOR CONSTRUCTION
- REVISED
- SEE REVISION

LIEB & MILLER
Architects
Planning
One Bodega Avenue
Petaluma, CA 94952
(707) 763-6813
Fax (707) 763-1899

This document and the information contained herein are the property of Lieb & Miller Architecture and Planning. Unauthorized use, copying, disclosure or publication by any method is prohibited without the written approval of Lieb & Miller Architecture and Planning.

RESTROOM REMODEL
PETALUMA PUBLIC LIBRARY
 SONOMA CO. LIBRARY
 100 FAIRGROUNDS DR.
 PETALUMA, CA.

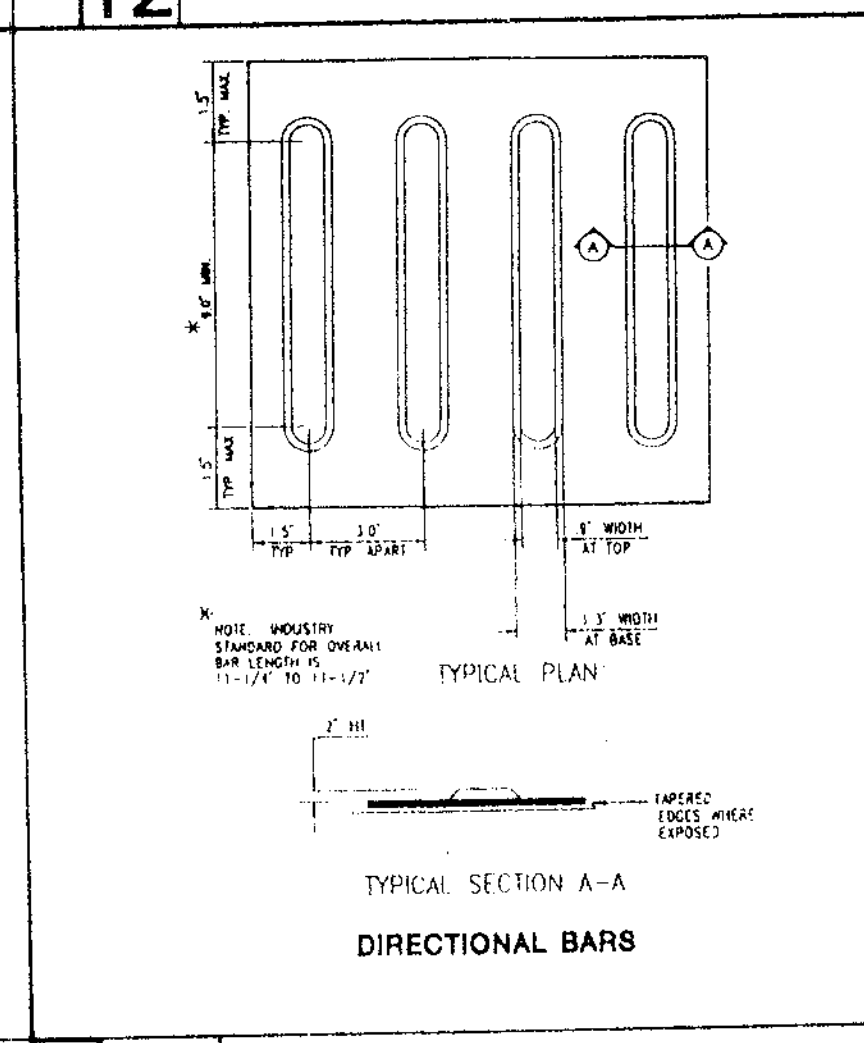
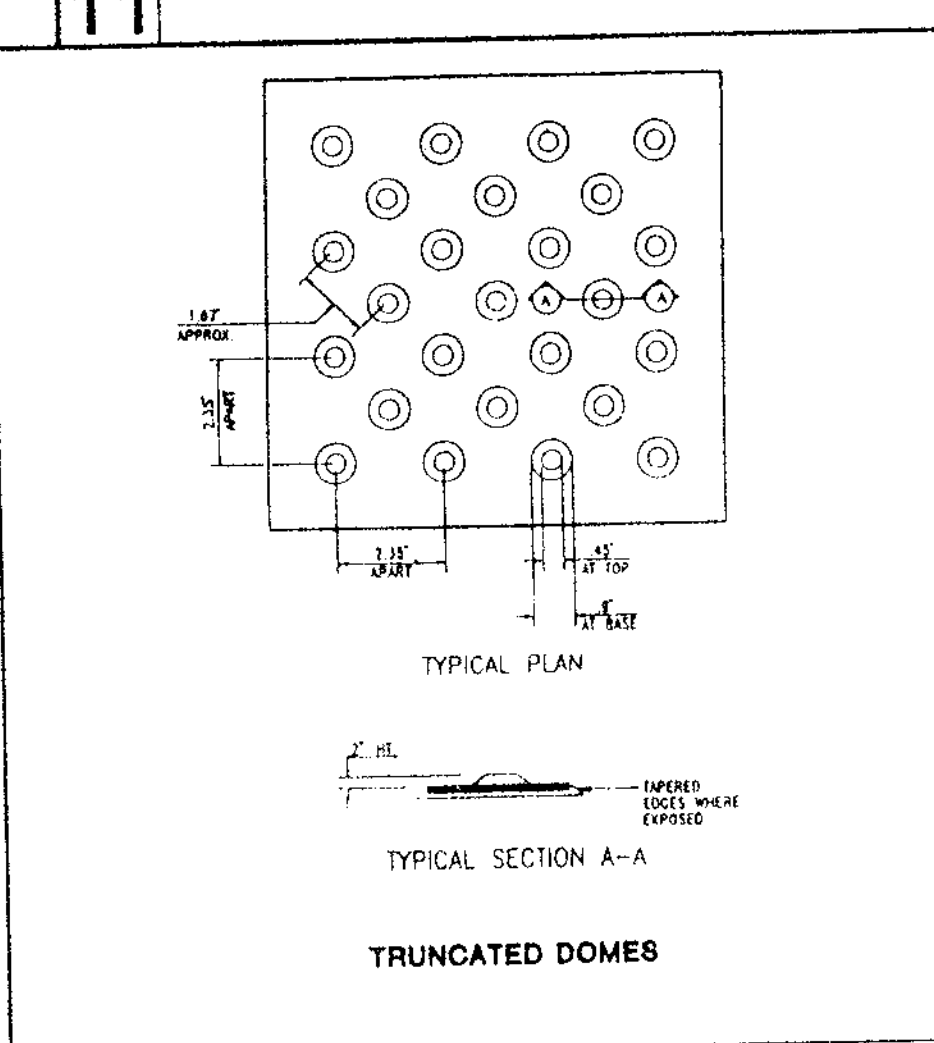
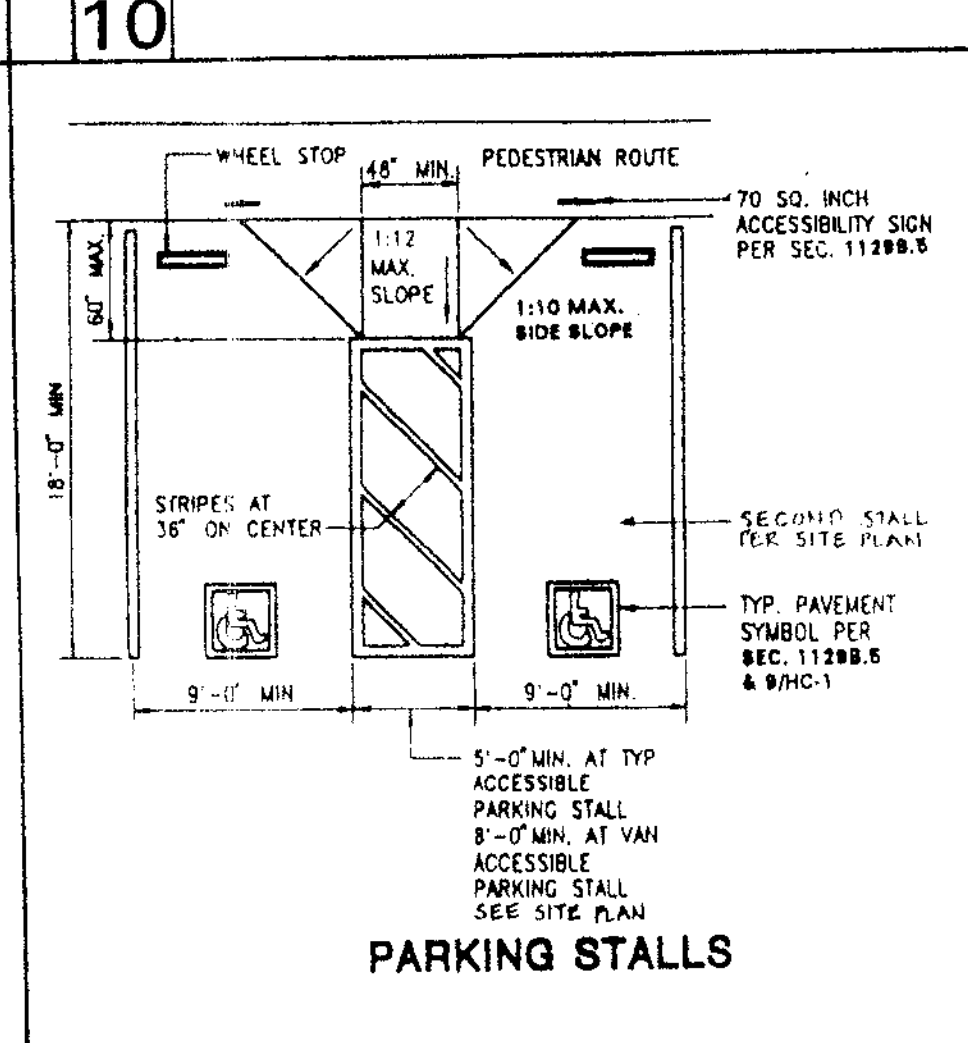
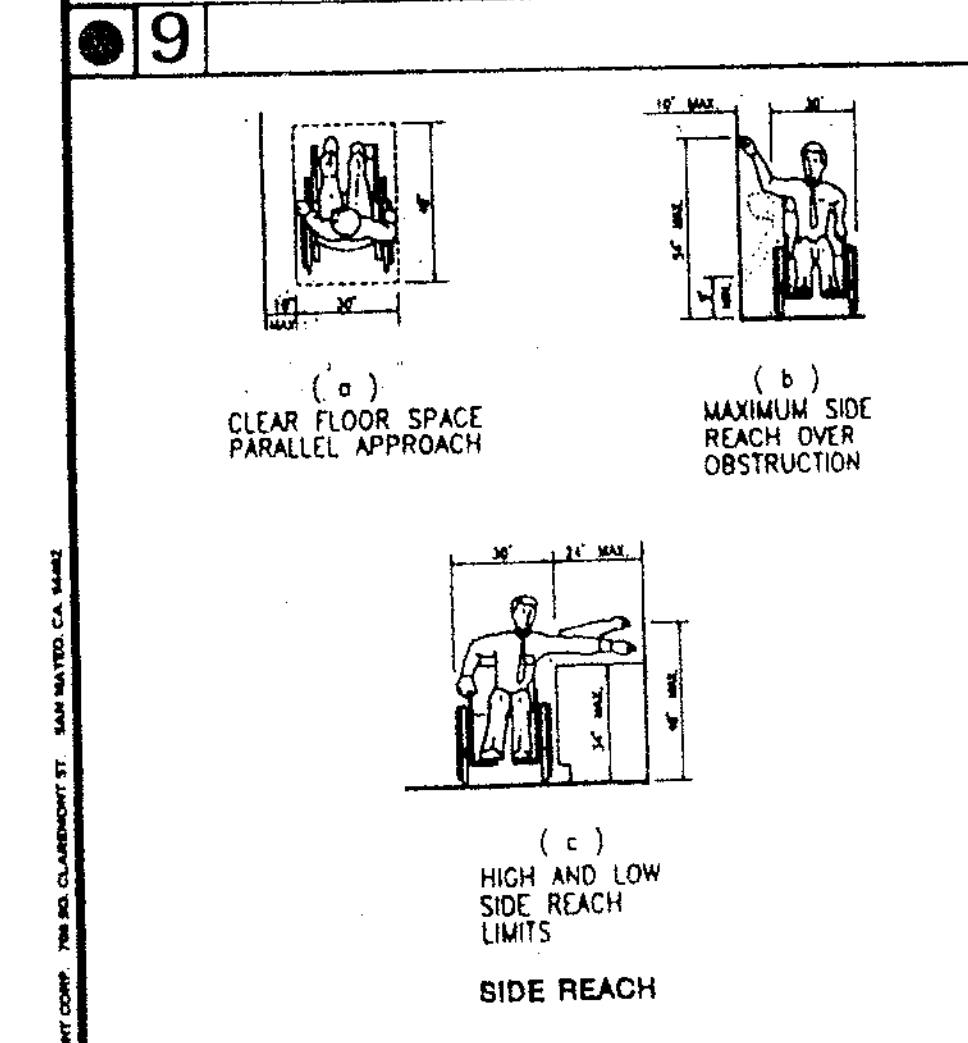
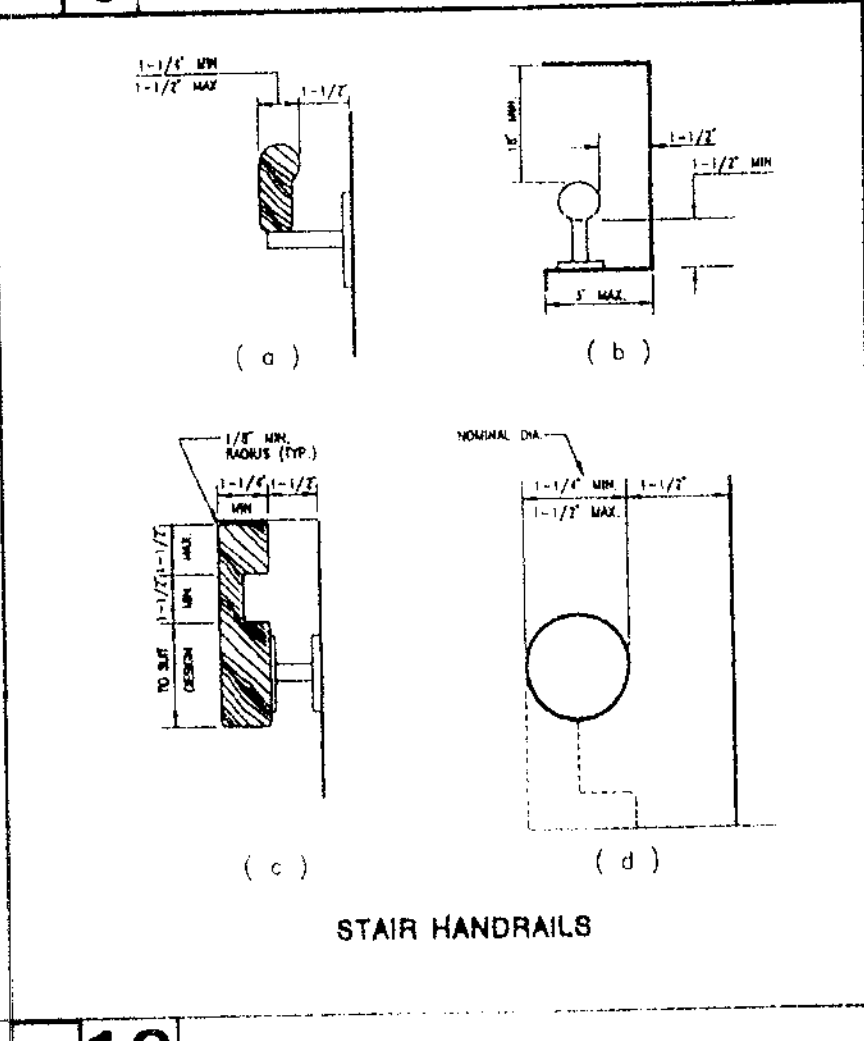
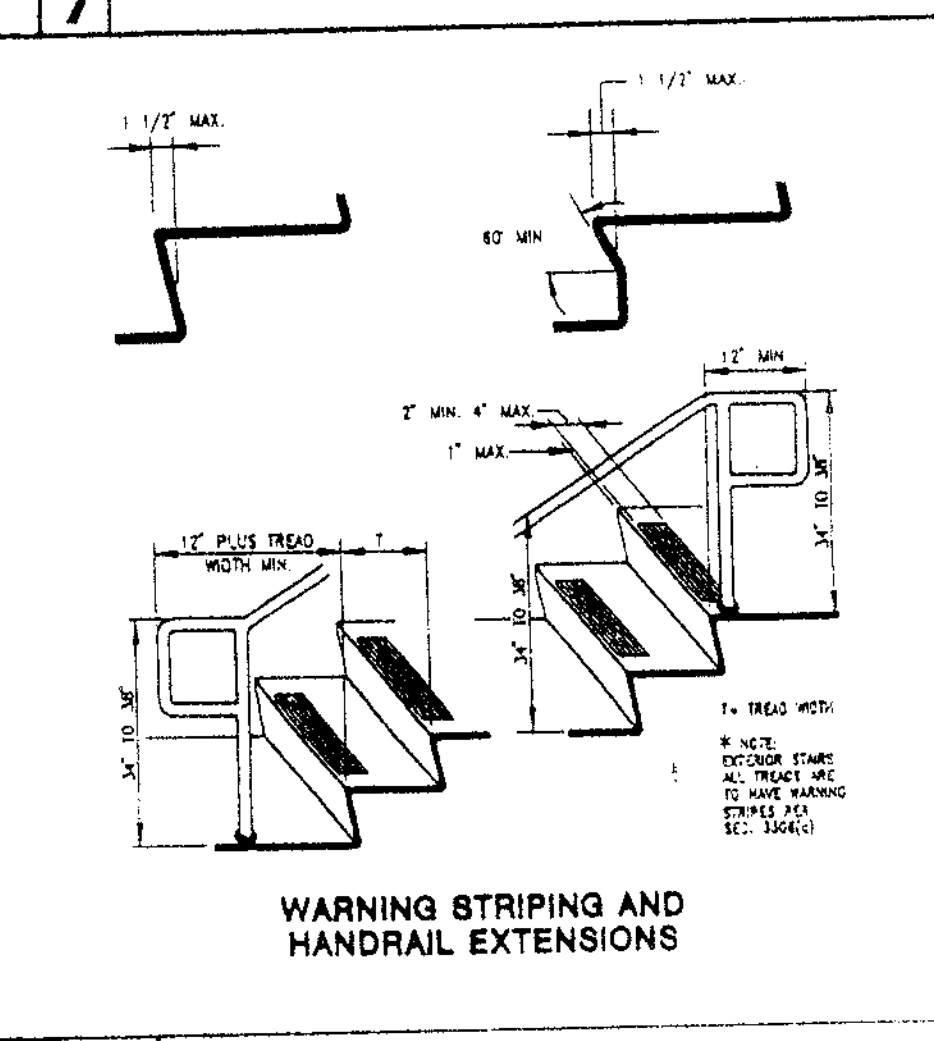
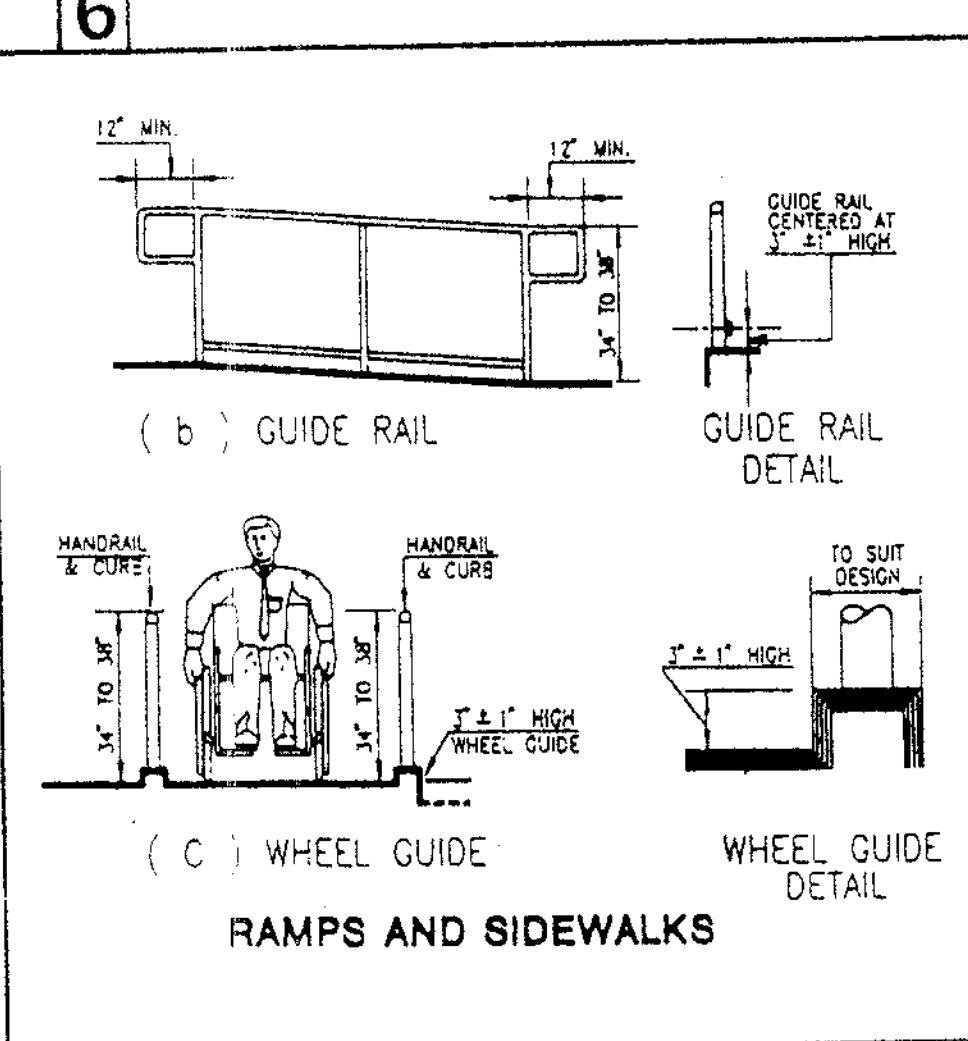
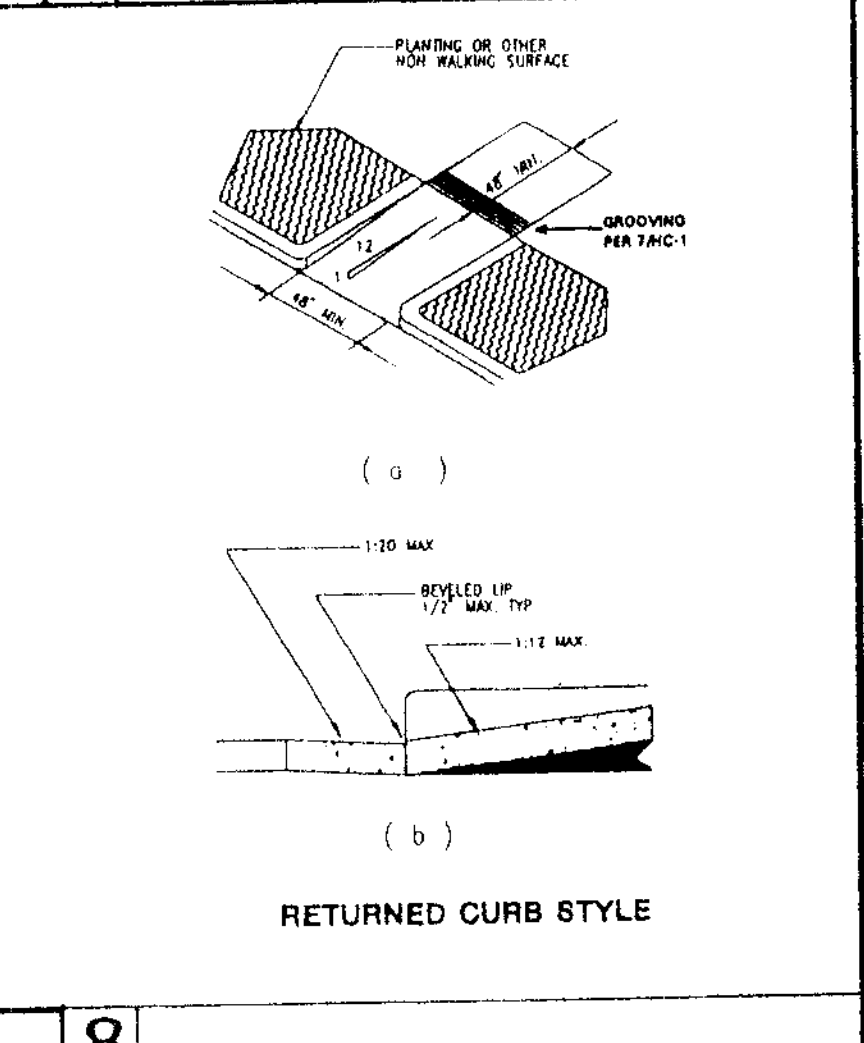
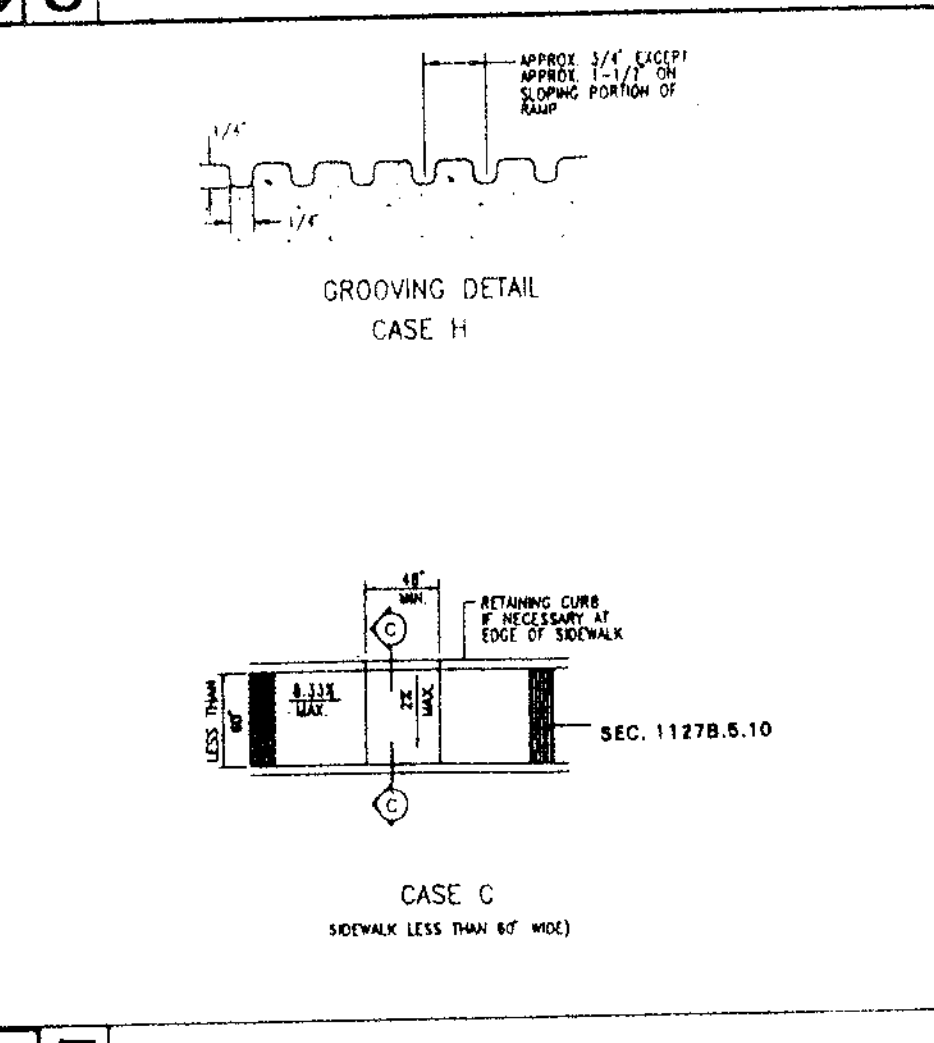
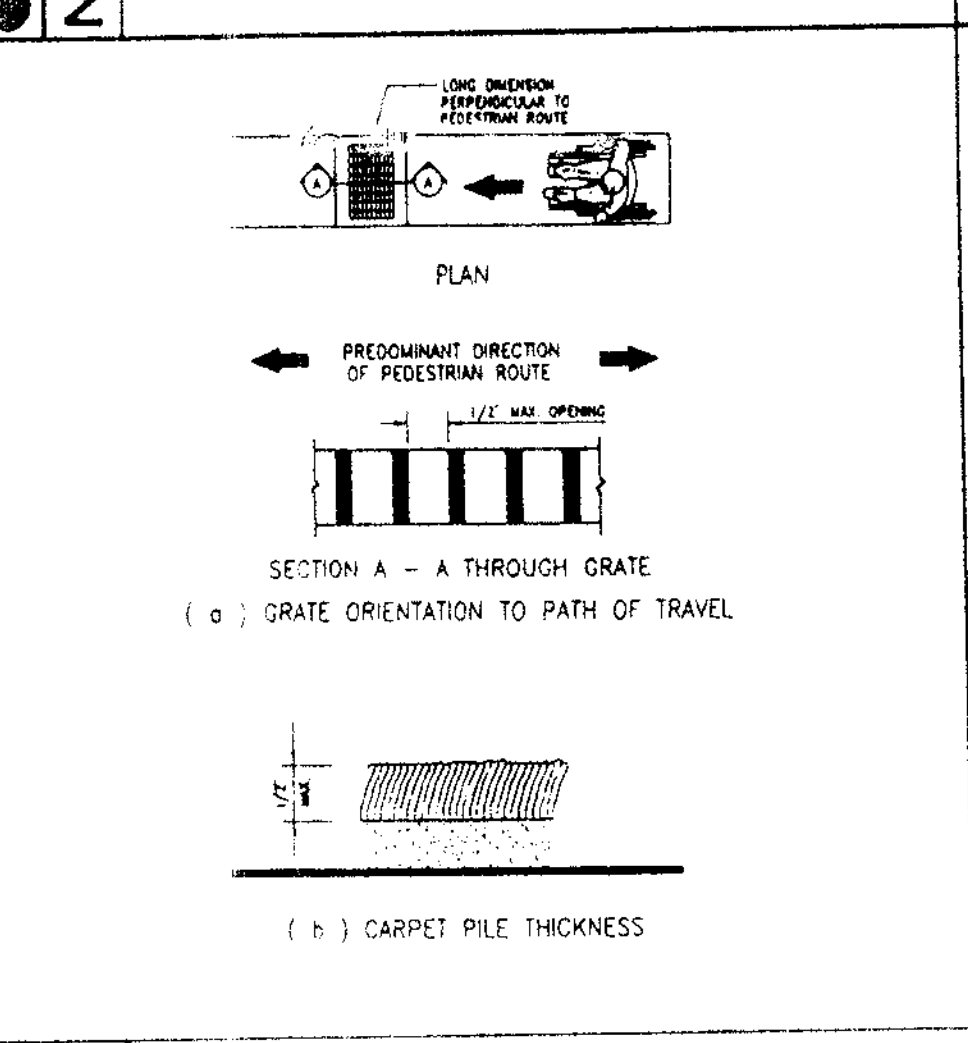
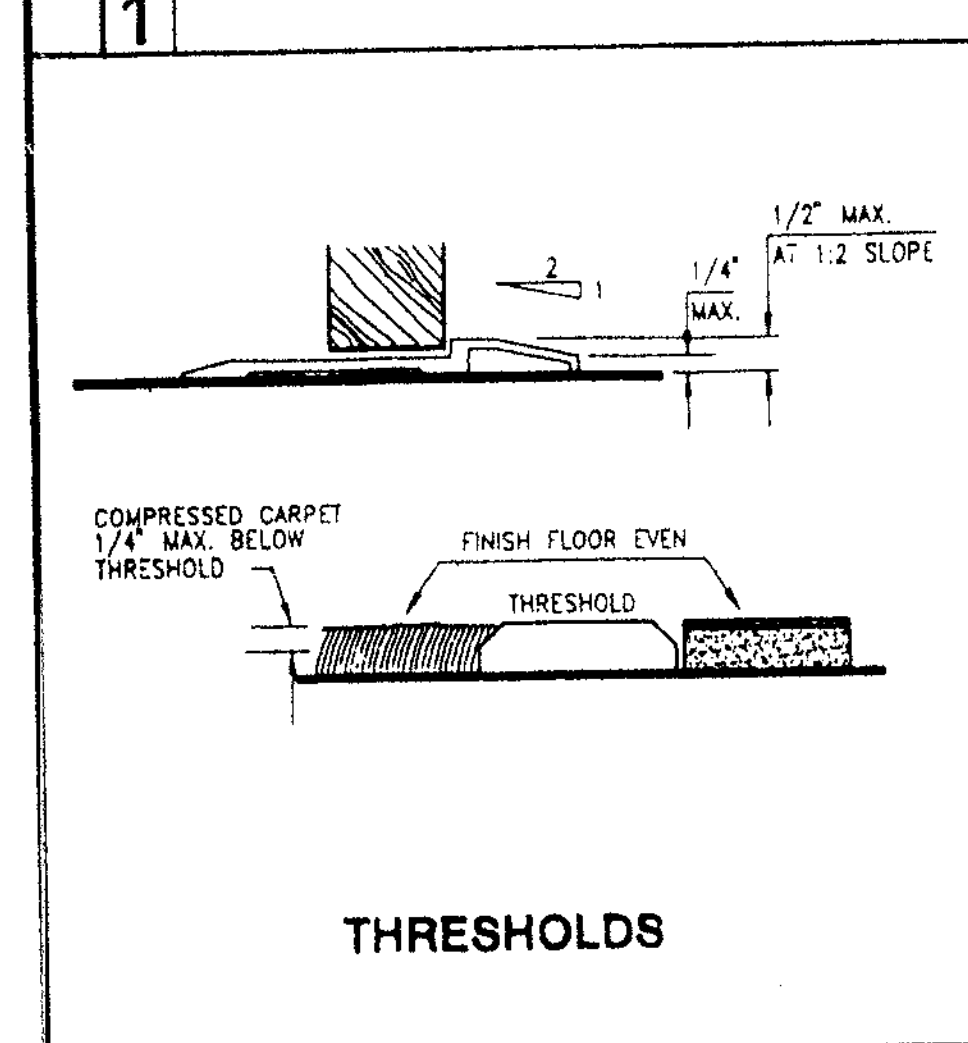
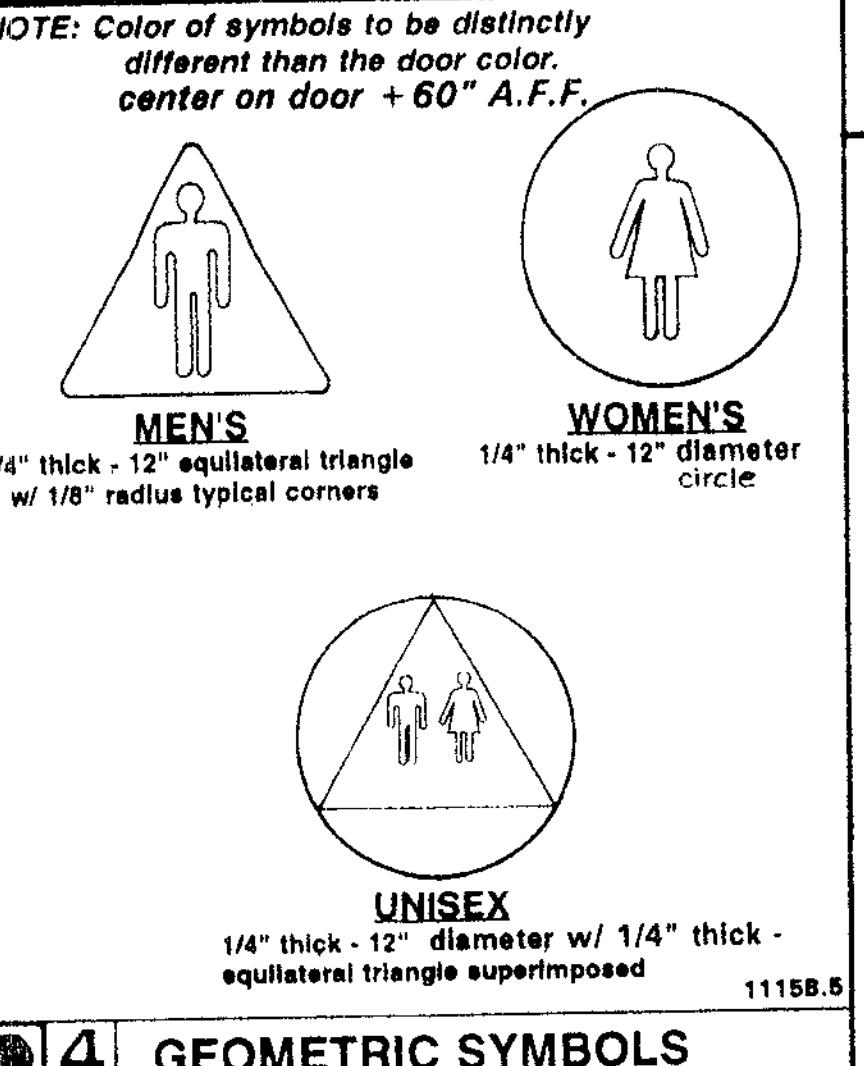
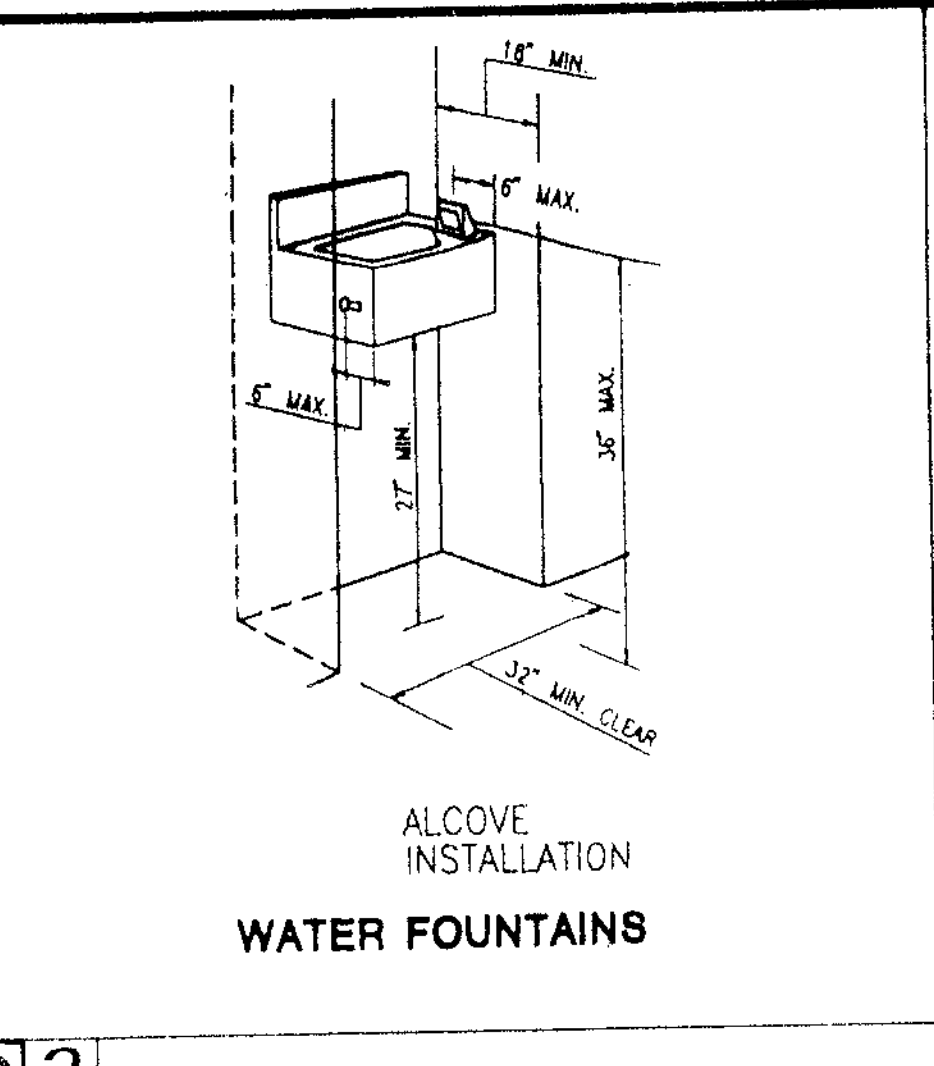
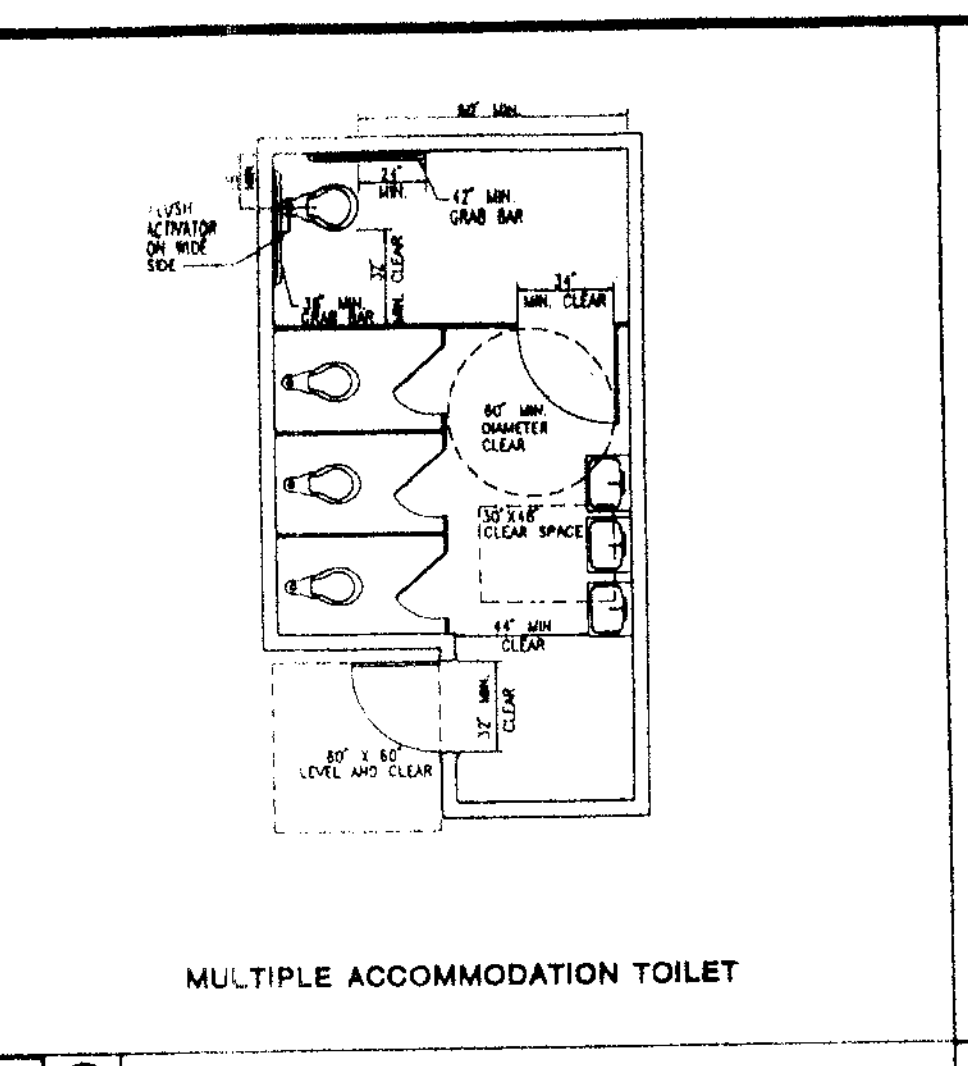
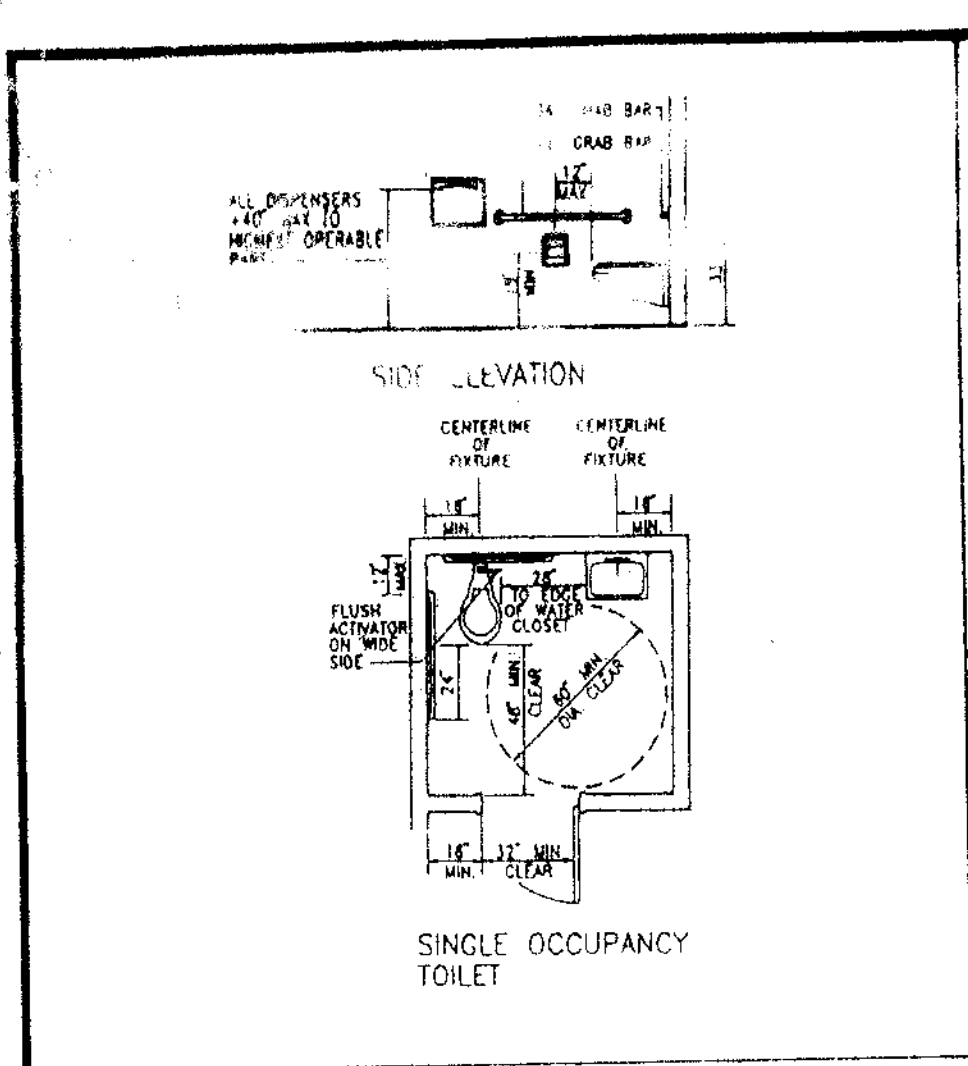
REVISED & PRINTED 05/16/99

TITLE SHEET

Date	Revision	Date	By
8/10/98	▲		
Drawn	▲		
Checked	▲		
Project	▲		
98-346	▲		
Sheet			

T-1

Of - Sheets



SYMBOL INDICATES USE OF THIS NOTE OR DETAIL

WATER CLOSETS. Provide 1.5 gal. for City of Petaluma requirements (1.6 gal. per CAC) or flushometer type fixtures. The height of accessible water closets shall be a minimum of 17 inches and maximum of 19 inches measured to the top of a maximum 2-inch-high toilet seat. Flush controls shall be lever or push button type. Controls for the flush valves shall be mounted on the wide side of toilet areas, no more than 44 inches above the floor. The force required to activate controls shall be no greater than 5 lbf. See Detail 1; 1502.0

TOILET TISSUE DISPENSER. Shall be located on wall within 12 inches of the front edge of the water closet seat at a minimum height above finished floor of 19 inches. Dispenser shall permit continuous flow only. 1115B.9.3

GRAB BARS. Shall be the same round shape and distance from wall as Detail 12(d). The top rail (mounting height) shall be set at 33 inches above finished floor if obstructions occur from water closet the height may be 36 inches max. Grab bars shall have blocking in wall that shall be capable of supporting a load of at least 250 lbs. 1115B.8

URINALS. Where one or more urinals are provided, at least one with a rim projecting a minimum of 14 inches from the wall and at a maximum of 17 inches above the floor shall be provided. 1503(a). Flush controls shall be per Water Closets, above with 1.0 Gal. per flush. 1502.0 1503(b).

LAVATORIES. Adjacent to wall shall be mounted with the rim or counter surface no higher than 34 inches above the finished floor and with a clearance of at least 29 inches from the floor to the bottom of apron with knee clearance under the front lip extending a minimum of 30 inches in width and 8 inches minimum depth at the top. Toe clearance shall be the same width and shall be a minimum of 9 inches high from the floor and a minimum of 17 inches deep from the front of the lavatory. 1504.0. Hot water and drain pipes under lavatories shall be installed or otherwise covered. There shall be no sharp or abrasive surfaces under lavatories. 1504.0. Faucet controls and operating mechanisms shall be operable with one hand by lever-operated, push-type and electronically controlled mechanisms. The force required to activate controls shall be no greater than 5 lbf. Self-closing valves are allowed if the faucet remains open for at least 10 seconds. 1504.0

RESTROOM IDENTIFICATION SYMBOLS. Doorways leading to sanitary facilities shall be identified by geometric symbols and shall be centered on the door at a height of 60 inches and their color and contrast shall be distinctly different of the color and contrast of the door. Also see Mounting Location and Height, 1117B.5.9 below. See Detail 4; 1115B.5

WATER CLOSET COMPARTMENT DOOR (MULTIPLE ACCOMMODATION). Door shall be 32 inches min. wide when located at end of stall, or 34 inches min. when located at side of stall with 9 inch min. space below door the finished floor. Provide loop or U-shaped handles mounted 30 inches to 44 inches above the finished floor. A latch of flip-over or sliding type shall be immediately above the handle. A 6 inch sq. sign of the International of Accessibility shall be mounted on door at 50 inches above finished floor. See 1117B.5.1 below. An automatic closing device shall be provided. Where there are 6 or more water closet compartments 1 ambulatory stall shall be provided in addition to the regular stall (see plan for location). This stall has the same requirements as above 1115B.7.1.3

RESTROOM MISC. FIXTURES. Towel, Sanitary Napkin, Waste Receptacle, etc., shall be located so all operable parts are within 40 inches of the finished floor. 1115B.9.2

DRINKING FOUNTAINS. 1117B.1 Shall have clear and unobstructed knee space & toe space under the drinking fountain. See Detail 3; 1117B.1.2 & 1507.0 The bubbler shall be activated by hand-operated lever type control located within 6 inches of the front of the fountain, or push bar control along the front of the drinking fountain, etc. The bubbler orifice shall be located within 6 inches of the front of the drinking fountain and shall be within 36 inches of the floor. The water stream from the bubbler shall be parallel to the front edge of the drinking fountain. See Detail 3; 1507.0

SIGNS OF IDENTIFICATION. International Symbol of Accessibility. The international Symbol of Accessibility shall be the standard used to identify facilities outside near front entry door, low and of ramp outside, at side of restroom door(s), etc., that are accessible to and usable by physically disabled persons. See Detail 5; 1117B.5.1 Color of Symbol. The symbol specified above shall consist of a white figure on a blue background. The blue shall be equal to color No. 15090 in Federal Standard 595B. 1117B.5.1.2. Braille Symbol. Contracted Grade 2 Braille shall be used wherever Braille symbols are specifically required in other portions of these standards. Dots shall be 1/10 inches on centers in each cell with 2/10 inch space between cells. Dots shall be raised a minimum of 1/40 inch above the background. 1117B.5.2. Character Height. Characters and numbers on signs shall be sized according to the viewing distance from which they are to be read. The minimum height is measured using an upper case X. Lower case characters are permitted. The minimum character height shall be 3 inches. 1117B.5.4 Proportions. Letters and numbers on signs shall have a width-to-height ratio of 3:5 and 1:1 and a stroke width to height ratio between 1:5 and 1:10. 117B.5.3 Contrast of Symbol. Characters and symbols shall contrast with their background, either light characters on a dark background or dark characters on a light background (non-glare finish). 1117B.5.5. Raised Characters and Pictorial Symbol Signs. When raised characters or symbols are used they shall conform to the following: 1117B.5.6 Letter Type. Letters and numbers on signs shall be raised of recessed 1/32 inch minimum and shall be sans-serif uppercase characters accompanied by Braille per Braille Symbol. 1117B.5.2. 1117B.5.6.1 Symbol Size. Raised characters or symbols shall be a minimum of 5/8 inches high of 2.04 max. height of 2 inches. 1117B.5.6.2 Pictorial Symbol Signs (Pictograms). Pictorial symbol signs (pictograms) shall be accompanied by the equivalent verbal description placed directly below the pictogram. The border dimension of the pictogram shall be a minimum of 6 inches in height. 1117B.5.6.3. Mounting Location and Height. Where permanent identification is provided for rooms and spaces (such as restrooms, assembly rooms, conference rooms, etc.), raised letters shall be provided and shall be accompanied by Braille in conformance with Raised Characters and Pictorial Symbol Signs Section. (above) 1117B.5.6. Signs shall be installed on the wall adjacent to the latch outside of the door or See Plan. Mounting height shall be 60 inches above the finish floor to the centerline of the sign and 3 inches away from door jamb. 1117B.5.9.

DOOR HARDWARE. Manually operated edge of surface mounted flush bolts and surface bolts are prohibited. When exit doors are used in pairs and approved automatic flush bolts are used, the door leaf having the automatic flush bolts shall have no door knob or surface-mounted hardware. The unlatching of any leaf shall not require more than one operation. 1133B.2.2.3. Hand-activated door opening hardware shall be centered between 30 inches and 44 inches above the floor. Latching and locking doors that are hand activated and which are in a path of travel shall be operable with a single effort by lever type hardware unless otherwise shown in door schedule. 1133B.2.2.4. Effort to Operate Doors. Maximum effort to operate doors shall not exceed 8-1/2 pounds for exterior doors and 5 pounds for interior doors. When fire doors are required, the maximum effort to operate the door may not exceed 15 pounds. 1133B.2.5.1. Door closers per 1133B.2.5.2. Closer timing. Doors with closers shall take at least three seconds to move to a point three inches from the latch.

ELECTRICAL SWITCHES & RECEPTACLES. 15-, 20-, and 30- ampere receptacle outlets shall be installed not less than 15 inches above the floor. 210-7(G) 1117B.6.3. Switches shall be mounted 48 inches above the floor to the center of the operating handle. 380-8(c)

FIRE PROTECTION SIGNALING DEVICES. The center of fire alarm initiating devices shall be located 48 inches above the floor of ground surface. 760-9.

CONTROLS. Height. The highest operable part of all controls, dispensers, receptacles and other operable equipment shall be placed within one of the reach ranges as set forth in Detail 13. 1117B.6.3

COUNTER TOPS OR WORK STATIONS. Minimum number shall be 5% but not less than (1). Height of counter or surface shall be between 28 inches & 34 inches above the finished floor. Width shall be no less than 36 inches. 1122B.1; 1122B.4; 1122B.3

HANDRAILS. The handgrip portion of handrails shall have a smooth surface with no sharp corners. Any wall or other surface adjacent to the handrail shall be free of sharp or abrasive elements. Edges shall have a minimum radius of 1/8 inch. See Detail 12; for grip dimensions: 1133B.4.2.6

STAIRWAYS. Approved stairway identification signs shall be located at each floor level in all enclosed stairways. The sign shall identify the stairway, indicate whether there is roof access, the floor level, and the upper and lower terminus of the stairway. The information shall be presented using raised Arabic numerals and raised Braille Symbols. 1117B.5.2. The sign shall be located approximately 5 feet above the floor landing immediately adjacent to the door strike side. 1133B.4.3. Striping for the Visually Impaired. Where stairways occur inside a building, the upper approach and the lower tread of each stair shall be marked by a strip of clearly contrasting color located per Detail 11. The strip shall be material that is at least as slip resistant as the other treads of the stair. 1133B.4.4. Where stairs occur outside a building, the upper approach and all treads shall be marked by a strip as per stairways inside a building. A painted strip shall be acceptable. See Detail 11; 1133B.4.4 All tread surfaces shall be slip-resistant. See Detail 11; 1133B.4.5.1. Nosings. See Detail 11; 1133B.4.5.2.

WALKS AND SIDEWALKS. Continuous Surfaces. Not interrupted by steps or by abrupt changes in level exceeding 1/2 inch and shall be a min. of 48 inches wide. See Plan. (See Details 6, 7, 8, and 10). Surfaces shall be slip-resistant as follows: 1. Slopes Less than 6 percent. Surfaces with a slope of less than 6 percent gradient shall be at least as slip resistant as that described as a medium salted finish. 2. Slopes 6 percent or greater. Surfaces with a slope of 6 percent gradient shall be slip-resistant. 3. Surface Cross Slopes. Surface cross slopes shall not exceed 1/4 inch per foot, the cross slopes may be increased to a max. of 1/2 inch per foot for distances not to exceed 20 feet. See plan for location. 1133B.7.1

PARKING SPACES. Surface slopes shall not exceed 1 (vert.) :50 (horiz.) (2% gradient) in any direction. 1129B.4.4 Identification of Parking Spaces for Off-Street Parking Facilities. Each parking space reserved for persons with physical disabilities shall be identified by a reflectorized sign permanently posted and visible from each stall consisting of a profile view of a wheelchair with occupant in white on dark blue background. The sign shall not be smaller than 70 square inches in area and when in a path of travel shall be posted at a minimum height of 80 inches or (on wall at 36 inches) from the bottom of the sign to the parking space finished grades. Van parking stalls per plan shall have an additional sign stating "Van-Accessible" mounted below the symbol of accessibility. Offstreet parking facilities shall have a sign immediately adjacent to and visible from each stall of space. The sign shall be no less than 17 inches by 22 inches in size with lettering not less than 1 inch in height which clearly and conspicuously states the following "Unauthorized vehicles parked in designated accessible spaces not displaying distinguishing placards of license plates issued for persons with disabilities may be towed at owners expense. Towed Vehicles may be reclaimed at _____ or by telephoning _____." Blank spaces are to be filled in with appropriate information as a permanent part of sign. Detail 14 for Location. Pavement Symbol at each accessible parking space of stall shall have a surface identification duplicated by outlining a profile view shall be located so that it is visible to a traffic enforcement officer when a vehicle is properly parked in the space and shall be 36 inches high and 36 inches wide. See Detail 9 for Proportions, Detail 14 for Location; 1129B.5

DETECTABLE WARNINGS AT HAZARDOUS VEHICULAR AREAS. If a walk crosses or adjoins a vehicular way and the walking surfaces are not separated by curb railings or other elements between the pedestrian areas and vehicular areas the boundary between the areas shall be defined by a continuous detectable warning which is 36 inches wide complying with section 1133B.8.3.1 thru 1133B.8.3.3. See Detail 15; 1133B.8.4

DETECTABLE WARNINGS AT TRANSIT BOARDING PLATFORMS. 1133B.8.3 Transit Boarding platforms shall have a detectable warning texture extending the full length of the loading area. This detectable warning texture shall have the following features: 1. Width 24 to 36 inches placed at the edge of the drop-off of safe area. 1133B.8.3.1 2. Durable slip-resistant material having a surface texture per Detail 15. The detectable warning shall contrast visually with adjoining walking surfaces, either light on dark or dark on light. The material used to provide contrast shall be an integral part of the walking surface. Warning surfaces shall differ from adjoining walking surfaces in resiliency or sound on cane contact. 1133B.8.3.2 3. Color. Yellow conforming to Federal Color No. 3953B as shown in Table IV of Standards to 595B. Where the color value contrast between the yellow warning and the main walking surface is less than 70 percent a one-inch wide black strip shall separate the yellow warning from the main walking surface. Contrast shall be determined by: Contrast = (B1 - B2 / B1) x 100% Where B1 = light reflectance value (LRV) of the lighter area and B2 = light reflectance value (LRV) of the darker area. See Detail 15; 1133B.8.3.3

DETECTABLE DIRECTIONAL TEXTURE AT BOARDING PLATFORMS. At transit boarding platforms, the pedestrian access shall be per Detail 16. This surface shall differ from adjoining walking surfaces in resiliency or sound on cane contact. The color of the directional texture shall comply with Section 1133B.8.3.3. This surface will be placed directly behind the yellow detectable warning texture specified in Section 1133B.8.3.3., aligning with all doors of the transit vehicles, where passengers will embark. The width of the directional texture shall be equal to the width of the transit vehicle's door opening (36 inches ±). The depth of the texture may not be less than 3/16 inches. See Detail 16; 1133B.8.3.4

RESTROOM REMODEL

PETALUMA PUBLIC LIBRARY

SONOMA CO. LIBRARY

100 FAIRGROUNDS DR. PETALUMA, CA.

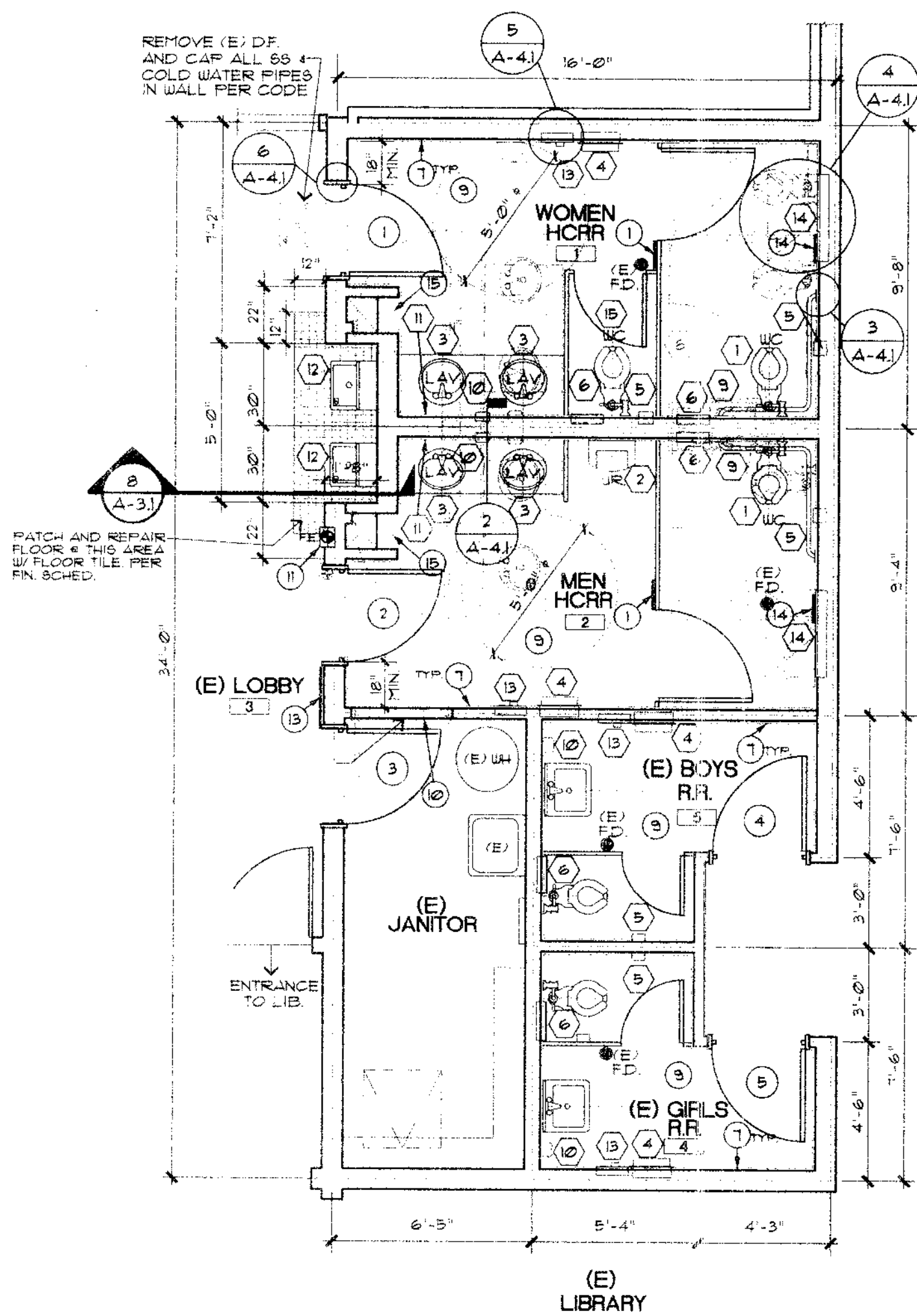
This document and the information contained herein are the property of Lieb & Miller, Architecture and Planning. Unauthorized use, copying, disclosure or publication by any method is prohibited without the written approval of Lieb & Miller, Architecture and Planning.

Date	Revision	Date	By

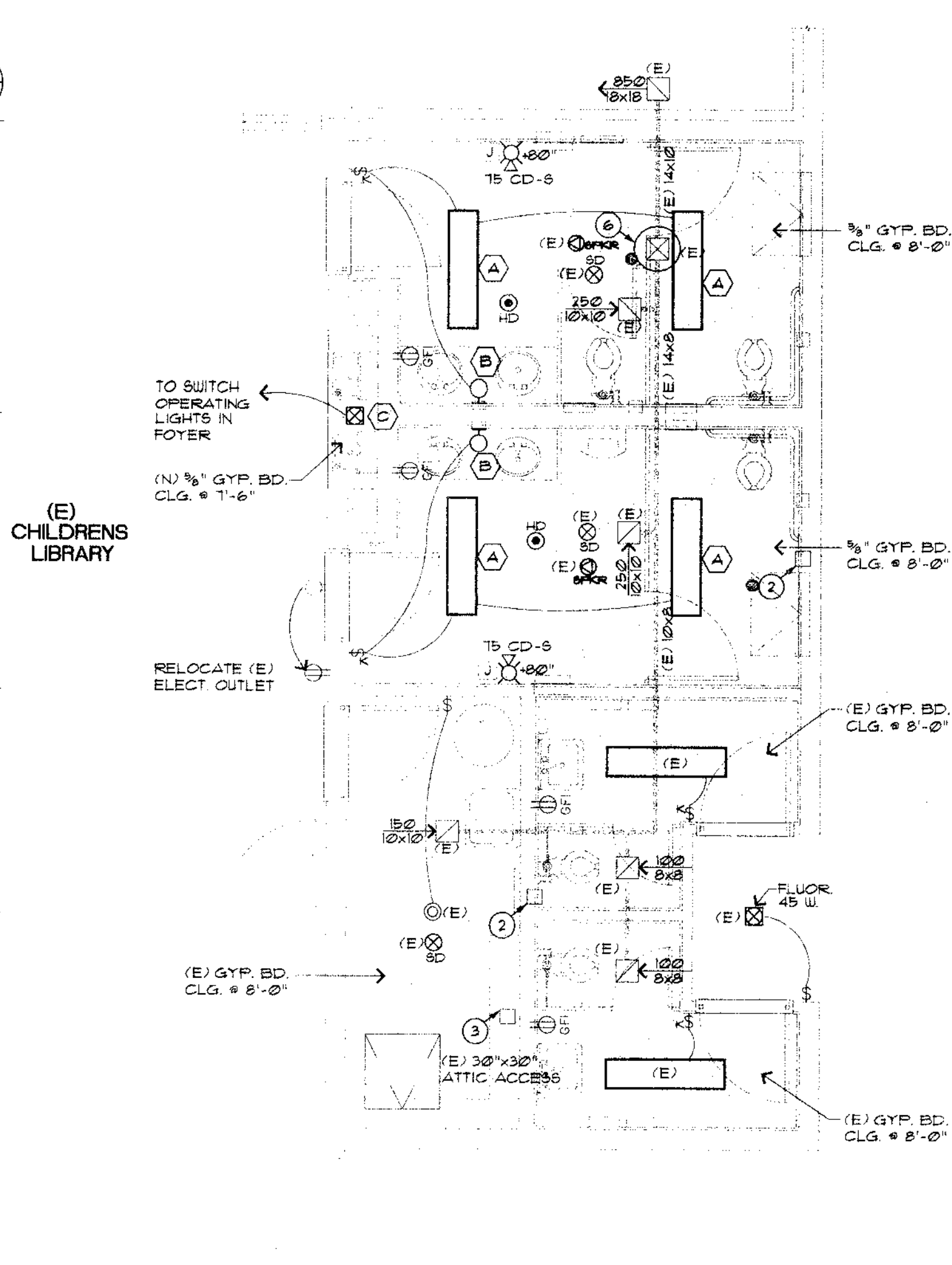
Sheet **HC-1**
Of **1** Sheets

WALL LEGEND

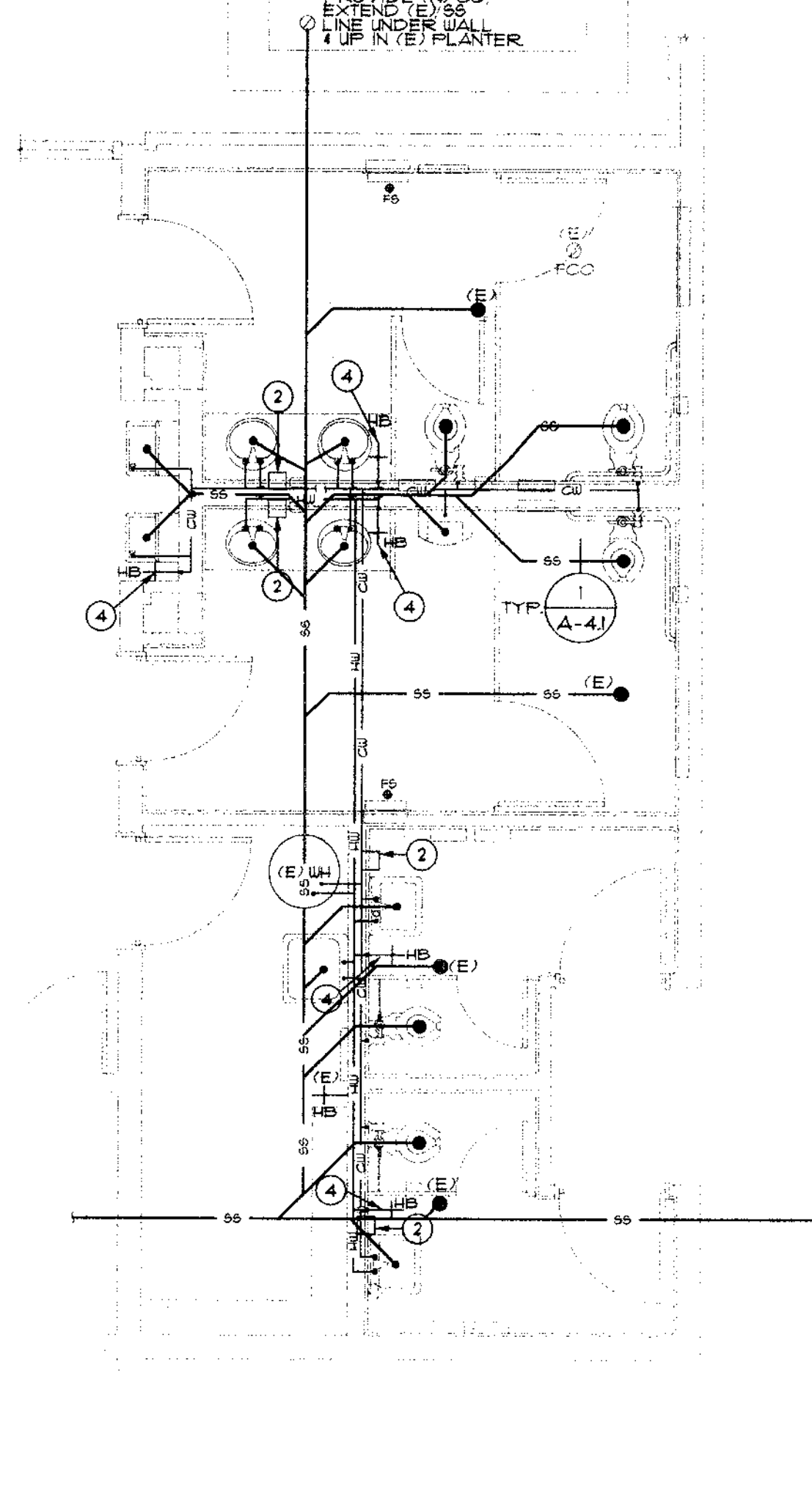
- EXISTING CONSTRUCTION TO REMAIN
- EXISTING CONSTRUCTION TO BE REMOVED
- NEW 2x STUDS @ 16" O.C. - SEE 1/A-6.1 SIM.
- NEW 2x STUDS @ 16" O.C. - SEE 2/A-6.1
- 1 HOUR FIRE WALL



(N) FLOOR PLAN
1/4" = 1'-0"



REFL. CLG. & HVAC PLANS,
ELECT. LIGHTING & POWER PLAN,
1/4" = 1'-0"



PLUMBING PLAN
1/4" = 1'-0"

ROOM NUMBER	ROOM	FLOOR FINISHES	BASE	WALLS	CEILING	CARPENTRY	REMARKS/NOTES
1	EXISTING WOMEN RESTROOM	SUP RESIST TILE CER TILE OVER (E) CONC	1/4" CORIAN BD OVER 5/8" GYP. BD	1/4" CORIAN BD OVER 5/8" GYP. BD	1/4" CORIAN BD OVER 5/8" GYP. BD	5/8" GYP. BD	8'-0"
2	EXISTING MEN RESTROOM	SUP RESIST TILE CER TILE OVER (E) CONC	1/4" CORIAN BD OVER 5/8" GYP. BD	1/4" CORIAN BD OVER 5/8" GYP. BD	1/4" CORIAN BD OVER 5/8" GYP. BD	5/8" GYP. BD	8'-0"
3	DRINKING FOUNTAIN ALCOVE	SUP RESIST TILE CER TILE OVER (E) CONC	5" HI. CER. TILE OVER 5/8" GYP. BD	5" HI. CER. TILE OVER 5/8" GYP. BD	5" HI. CER. TILE OVER 5/8" GYP. BD	5/8" GYP. BD	8'-0"
4	EXISTING GIRLS RESTROOM	SUP RESIST TILE CER TILE OVER (E) CONC	5" HI. CER. TILE OVER 5/8" GYP. BD	5" HI. CER. TILE OVER 5/8" GYP. BD	5" HI. CER. TILE OVER 5/8" GYP. BD	5/8" GYP. BD	8'-0"
5	EXISTING BOYS RESTROOM	SUP RESIST TILE CER TILE OVER (E) CONC	5" HI. CER. TILE OVER 5/8" GYP. BD	5" HI. CER. TILE OVER 5/8" GYP. BD	5" HI. CER. TILE OVER 5/8" GYP. BD	5/8" GYP. BD	8'-0"

NOTE: WHERE CORIAN OCCURS, ALL WALLS TO BE PRIMED WITH 1 COAT OF PVA PRIMER.

FLOORS	BASE	WALLS	CEILING
1 CARPET W/PAD	6" TOPSET RUBBER	1 GYP. BD, SMOOTH TEXTURE	A GYP. BD (SEE WALLS)
2 CARPET GLUE DOWN	6" INTEGRAL COVE	2 GYP. BD, SPRAY TEXTURE	B SUSP. ACUSTIC TILE
3 CARPET TILES	3" REVERSABLE WD. BASE	3 GYP. BD, TROWEL TEXTURE	C SURFACE APPLIED A.T.
4 OAK STRIP	1/2" BASE WITH CAP	4 VINYL COVERED GYP. BD	D WOOD DECKING
5 PARQUET	6" CERAMIC TILE	5 WALL PAPER OVER GYP. BD	E
6 RESILIENT SHEET	6	6 CEMENT PLASTER	F
7 VINYL COMPOSITION TILE	7	7 GYPSUM PLASTER	G
8 CERAMIC TILE QUARRY	8	8 EXPANDED MASONRY	H
9 CERAMIC TILE	9	9 CERAMIC TILE	I
10 EXPOSED CONCRETE	10	10 FRP BOARD (0.09" FIBERGLASS)	J
	11	11 WOOD PANELING	
	12	12 5/8" TYPE 'X' GYP. BD	

NOTE: FOR GROUP SCHEDULES SEE SHEET A-4.1

SYMBOL	ITEM	MANUF.	CAT #	REMARKS/NOTES
1	WATER CLOSET (ADA COMPLIANT)	KOHLER KINGSTON	K-4330	1.6 GPF, ELONGATED BOWL, WHITE, TOP OF SEAT 17"-17"
	TOILET SEAT	BENEKE	523	OPEN FRONT, ELONGATED, WHITE
	FLUSH VALVE	SLOAN	811-MC	NOT GREATER THAN 1.6 GAL PER FLUSH, SENSOR OPERATED, BATTERY POWERED
	FIXTURE CARRIER	ZURN	Z-1204	
2	URINAL	HIGHER DARTFIELD	K-9024-T	FLUSH VALVE
	FLUSH VALVE	SLOAN	8180-10	LOW CONSUMPTION (1.0 GPF) SENSOR OPERATED, BATTERY POWERED
	FIXTURE CARRIER	ZURN	Z-1222	
3	COUNTERTOP LAVATORY	1/2" CORIAN INTEGRAL W/ COUNTER	ET-600	SENSOR OPERATED, BATTERY POWERED, 1.6 GAL PER FLUSH
	LAVI FAUCET	SLOAN		
4	WASTE RECEPTACLE	BRADDEX	315-35	RECESS MOUNTED
5	TOILET TISSUE DISPENSER	BRADDEX	5412	DUAL ROLL, RECESSED
6	TOILET SEAT COVER DISPENSER	BRADDEX	5447	
7				
8	GRAB BARS	BRADLEY OR EQUAL	800 SERIES	
9	SOAP DISPENSER	BRADDEX	543	
10	MIRROR			
11	DRINKING FOUNTAIN	ELKAY	EDFP-14-C	BATH S.S., MOUNTING HEIGHT PER INT. ELEV. 2/A-3.1
12	HAND DRYER	AMERICAN DRYER	DR TN SS-R	RECESS MOUNTED
13	SOAP DISPENSER	PROCAR	100 SBR-R	RECESS MOUNTED, PROVIDE LOCK AND KEY
14	REGULAR WATER CLOSET	KOHLER, KINGSTON	K-4330	1.6 GPF, ELONGATED BOWL, WHITE, TOP OF SEAT 15" FROM FIN. FLR
	TOILET SEAT	BENEKE	523	OPEN FRONT, ELONGATED, WHITE
	FLUSH VALVE	SLOAN	811-MC	NOT GREATER THAN 1.6 GAL PER FLUSH, SENSOR OPERATED, BATTERY POWERED
	FIXTURE CARRIER	ZURN	Z-1204	

SYMBOL	ITEM	MANUF.	CAT #	LAMPS	WATTS	REMARKS/NOTES	DETAIL
A	2-LAMP FLUORESCENT	LITHONIA	WV240130	2-40W T-12	18 W	W/ A12 PATTERN, 100% POLYCARBONATE	
B	2-LAMP FLUORESCENT	LITHONIA	WV240120	2-40W T-12	18 W	W/ A12 PATTERN, 100% POLYCARBONATE	
C	DOWNLIGHT FLUORESCENT	LITHONIA	AF 118DIT 64R	DBL. TUBE	18 W		
D							
E							

KEY NOTES

- PROVIDE SIGNS IN WOMEN'S AND MEN'S RESTROOMS. ASK FOR CHANGING TABLE'S KEY AT FRONT 'DESK' IN 1" HI LETTERS ON CONTRASTING BACKGROUND.
- PROVIDE AUTO TRAP W/ PRIMER IN STAINLESS STEEL BOX W/KEY, RECESSED IN WALL FOR ALL EXISTING FLOOR DRAINS.
- PROVIDE AUTOMATIC TEMPERATURE CONTROL FOR ALL RESTROOM FAUCETS, LOCATE IN ATTIC NEXT TO ATTIC ACCESS IN JANITOR ROOM.
- INSTALL HOSE BIBBS UNDER SINKS OR LAVATORIES W/ FLUSH STAINLESS STEEL BOX W/ KEY. SUPPLY HOT WATER ONLY. HOSE BIBB IN DRINKING FOUNTAIN ALCOVE. (SUPPLY COLD WATER ONLY). HOSE BIBB SHALL BE SET IN RECESSED BOX.
- THE CENTER OF THE GRIP OF THE OPERATING HANDLE OF CONTROLS OR SWITCHES TO BE USED TO CONTROL LIGHTING AND COOLING HEATING AND VENTILATING EQUIPMENT SHALL NOT BE MORE THAN 48 INCHES ABOVE THE FLOOR OR WORKING PLATFORM.
- REPLACE (E) EXHAUST FAN MOTOR IN ATTIC SPACE W/ 1/2 HP 1140 RPM 'GREENHECK' CAPABLE OF PRODUCING 850 CFM @ 0.25" STATIC PRESSURE.
- REMOVE (E) TILE ON WALLS DESIGNATED TO REMAIN.
- ALL DISCARDED ITEMS TO BE DISPOSED OF IN A LEGAL MANNER.
- REMOVE (E) CONC. FLOOR FINISH. PREPARE SURFACE FOR INSTALLATION OF NEW TILE.
- 5/8" GYP. BD. FINISH TO MATCH (E) ON ADJACENT WALLS.
- RELOCATE (E) FIRE EXTINGUISHER TO HERE.
- PROVIDE SOLID BLOCKING IN CEILING FOR TOILET PARTITIONS.
- RELOCATE (E) 24"x24" PLAQUE TO WALL ACROSS FOYER.
- PROVIDE SIGNS ABOVE CHANGING STATIONS. DO NOT DISPOSE OF DIAPERS INTO TOILET, PLACE THEM IN WASTE RECEPTACLE.
- 14"x14"x3/4" DEEP BUILT IN BOOK SHELF, FINISH W/ 1/4" THICK CORIAN. SEE DETAIL 1/A-4.1.

LEGEND

NOT NECESSARILY ALL SYMBOLS ON THIS DRAWING

- ELECTRICAL PANEL, METER, DISCONNECT SWITCH - SEE A-1.1
- ELECTRICAL SUBPANEL
- CEILING MOUNTED SPEAKER
- 4x4 JUNCTION BOX W/ 3/8" MUD RING, STUB UP INTO ATTIC SPACE
- DUPLEX RECEPTACLE 20A, 125V, 15" U.O.N.
- DUPLEX RECEPTACLE 20A, 125V, 15" U.O.N. GROUND FAULT CIRCUIT INTERRUPTER TYPE.
- DUPLEX RECEPTACLE 20A, 125V, 15" U.O.N. WATER PROOF TYPE GROUND FAULT CIRCUIT INTERRUPTER TYPE.
- FOURPLEX RECEPTACLE 20A, 125V, 15" U.O.N.
- RECEPTACLE 220V, 42" U.O.N.
- EXHAUST FAN
- WALL MOUNTED LIGHT FIXTURE
- RECESSED MOUNTED LIGHT FIXTURE
- 110V. SMOKE DETECTOR ON CEILING
- HEAT DETECTOR ON CEILING, SINGLE GANG BOX W/ 3/8" MUG RING. ATTACH TO (E) CONDUIT, SUPPLY 18V WIRE TO SMOKE DETECTOR LOCATION DETECTOR AND HEAT SIGNAL WIRE ARE (N.I.C.)
- SURFACE MOUNTED LIGHT FIXTURE
- PORCELAIN SOCKET LIGHT 100W.
- 2' x 4' LAY-IN FLUORESCENT LIGHT FIXTURE
- WALL OR CEILING SURFACE MOUNTED LIGHT FIXTURE
- STROBE LIGHT, STUB WIRING INTO (E) STORAGE ROOM.
- SINGLE POLE SWITCH 48", 20A, 125V
- THREE WAY SWITCH 48", 20A, 125V
- SINGLE POLE SWITCH 48", 20A, 125V - TIMER TYPE 30 MIN
- KEY SWITCH 48", 20A, 125V
- SINGLE POLE SWITCH 48", 20A, 125V - DIMMER TYPE
- THREE WAY SWITCH 48", 20A, 125V - DIMMER TYPE
- DIGITAL PROGRAMMABLE THERMOSTAT
- EXHAUST FAN IN CEILING SPACE
- EXHAUST AIR CEILING REGISTER
- T.C. TIME CLOCK
- P.C. PHOTOCELL
- U.O.N. UNLESS OTHERWISE NOTED
- (E) EXISTING
- (N) NEW
- (N.I.C.) NOT IN CONTRACT

ELECTRICAL NOTES

- CONTRACTOR TO VERIFY THE ADEQUACY OF (E) CIRCUITS TO SERVE THE PROPOSED REMODEL AND ADDITION PRIOR TO COMMENCEMENT OF WORK. IF ANY ADDITIONAL BREAKERS OR POWER IS REQUIRED, IT SHOULD BE INCLUDED AS PART OF JOB AS A DESIGN / BUILD.
- COVER PLATES, OUTLET BOXES INCLUDING RECEPTACLES, SWITCHES AND OTHERS STAINLESS STEEL.
- SYMBOLS LABELLED (E) ARE TO REMAIN, U.O.N.
- PROVIDE SWITCHING TO MATCH (E) DESIGN.
- INSTALL ALL NEW WIRING IN CONDUIT.
- SECURITY CONTRACTOR (ALL PRO ALARM CO.) SHALL SUPPLY AND INSTALL ALL STROBE LIGHTS SHOWN PER CODE, THE INTO (E) ELECT. PANEL AND TEST ALL EQUIPMENT PER LOCAL FIRE MARSHAL STANDARDS. THIS PORTION OF WORK IS N.I.C. HOWEVER CONTRACTOR TO COORDINATE W/ SAID COMPANY.

PLUMBING NOTES

- CONTRACTOR TO VERIFY LOCATION OF WATER, WASTE AND GAS MAIN LINES ON SITE, PRIOR TO COMMENCEMENT OF WORK.
- CONTRACTOR TO VERIFY THE ADEQUACY OF (E) WATER AND WASTE LINES TO SERVE THE PROPOSED REMODEL AND ADDITION PRIOR TO COMMENCEMENT OF WORK. IF ANY ADDITIONAL WORK IS REQUIRED, THE CONTRACTOR SHALL INCLUDE IT AS PART OF JOB AS DESIGN / BUILD.
- SYMBOLS LABELLED (E) ARE TO REMAIN, U.O.N.
- PROVIDE CAST IRON PIPE FOR ALL SANITARY SEWER LINES.
- PROVIDE COPPER PIPING FOR ALL HOT AND COLD WATER SUPPLY LINES.
- FOR 95 FOR NEW FIXTURES, LOCATE, MODIFY AND CONNECT TO (E) 95 AND VENT AS REQUIRED PER CODE.
- FOR HOT AND COLD WATER SUPPLY FOR NEW FIXTURES, LOCATE, MODIFY AND CONNECT TO (E) LINES AS REQUIRED PER CODE. INSULATE (N) HOT WATER LINES PER TITLE 24.
- STRAP (E) WATER HEATER TO WALL TO RESIST HORIZONTAL DISPLACEMENT PER UPC 510.5.

LEGEND

- LOCATION OF FRAME WALL OR EQUIPMENT ABV. FOR REFERENCE ONLY
- SS SANITARY SEWER LINE
- HW DOMESTIC HOT WATER LINE
- DC DOMESTIC COLD WATER LINE
- (E) FLOOR DRAIN
- (E) FLOOR CLEAN OUT
- FIRE SPRINKLER HEAD OVER TRASH RECEPTACLE

PLUMBING DESIGN / BUILD

NOTES:

- WASTE AND HOT AND COLD WATER LINE LOCATIONS ARE SUGGESTED, FINAL LOCATION TO BE DETERMINED AT TIME OF CONSTRUCTION PER FIELD CONDITIONS.
- PROVIDE SHOP DRAWINGS PER SPECIFICATIONS.
- REFER TO DESIGN / BUILD SERVICES NOTE ON SHEET T-1.

One Bodega Avenue
Fetaluma, CA 94952
(707) 763-6813
Fax (707) 763-7899

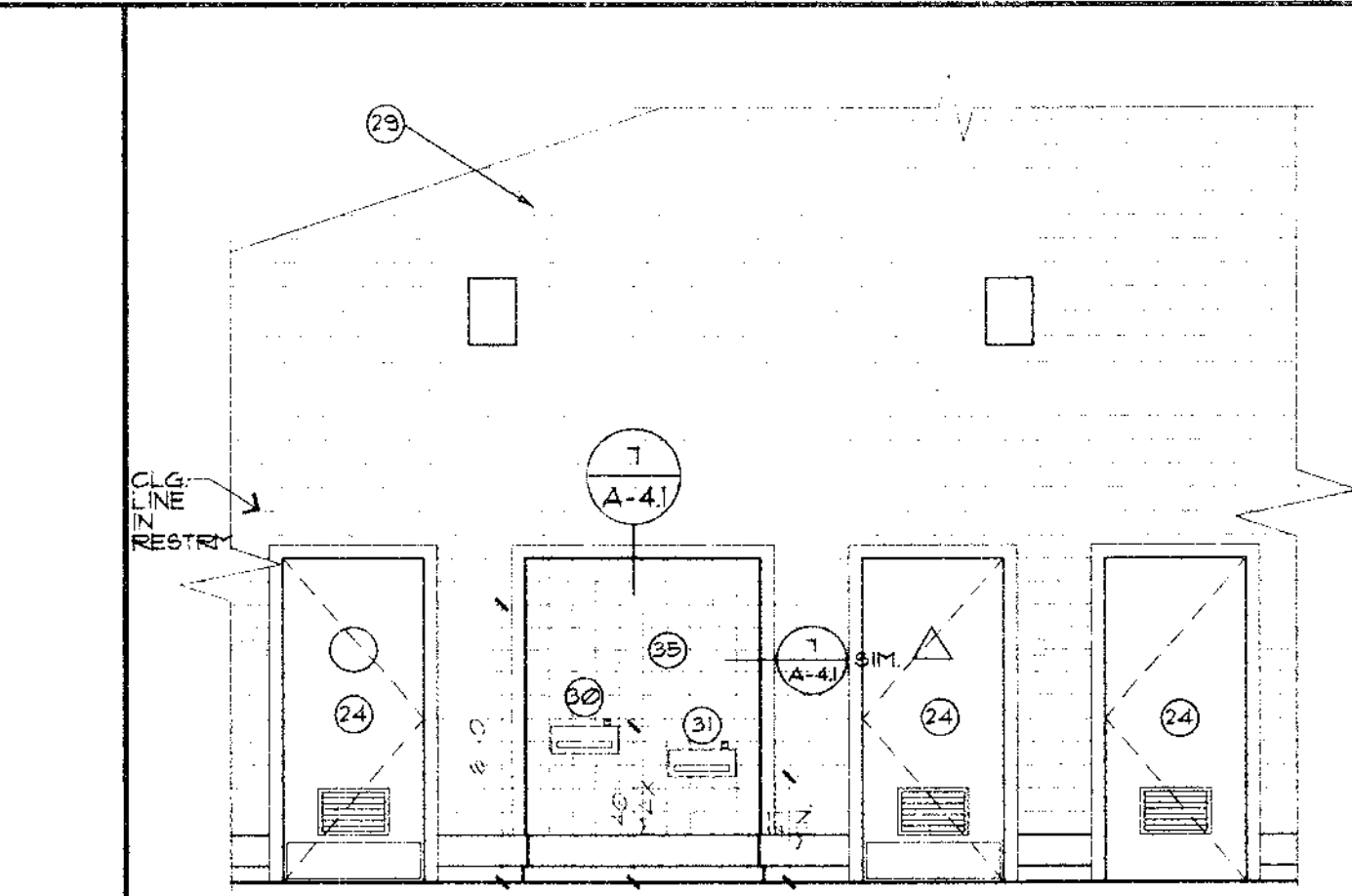
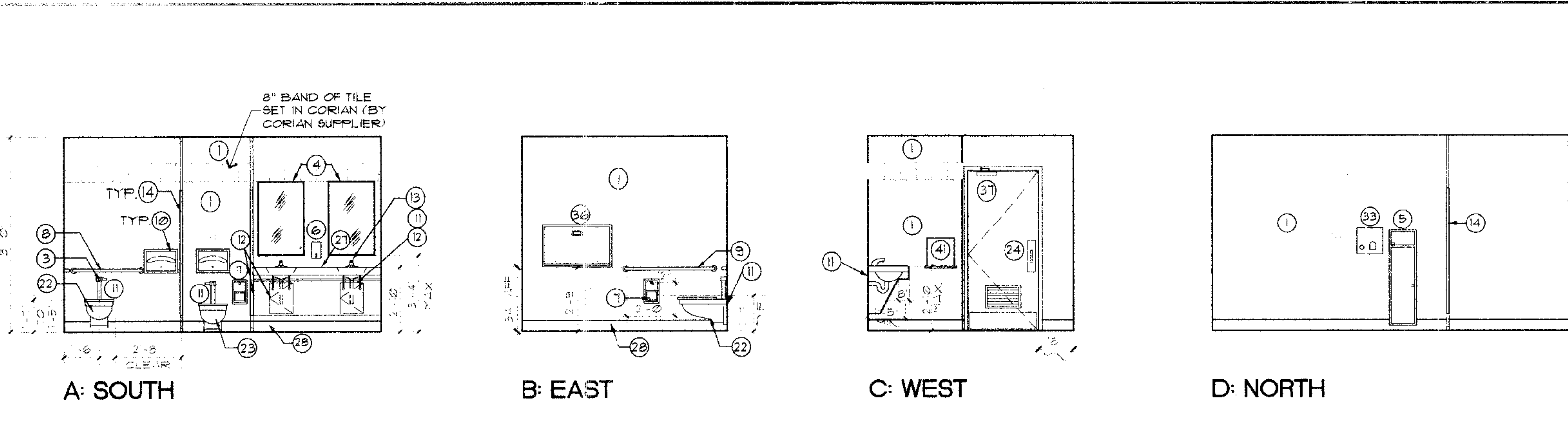
This document and the information contained herein are the property of Lieb & Miller, Architecture and Planning. Unauthorized use, copying, disclosure or publication by any method is prohibited without the written approval of Lieb & Miller, Architecture and Planning.

RESTROOM REMODEL
PETALUMA PUBLIC LIBRARY
 SONOMA CO. LIBRARY
 100 FAIRGROUNDS DR.
 PETALUMA, CA.

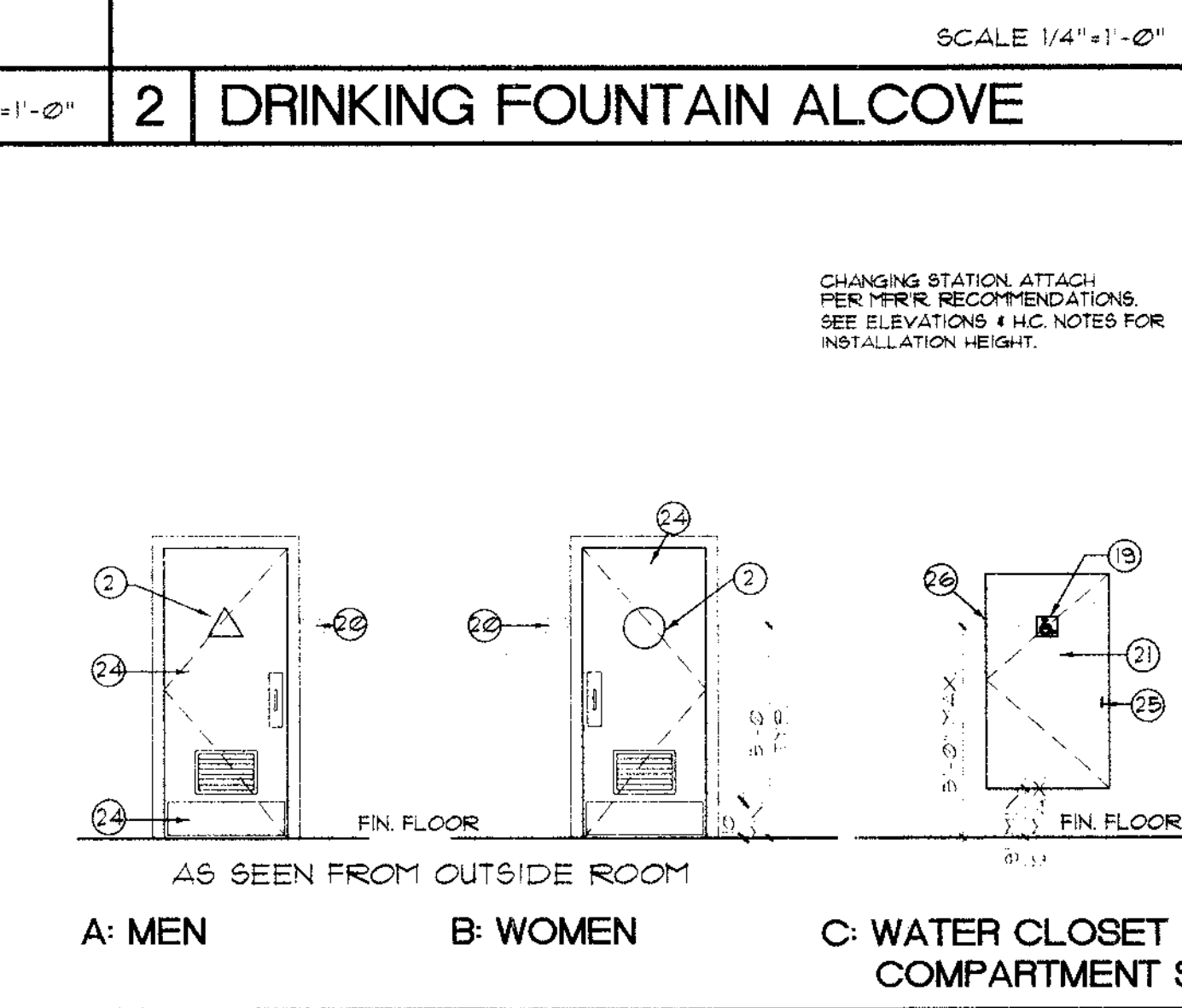
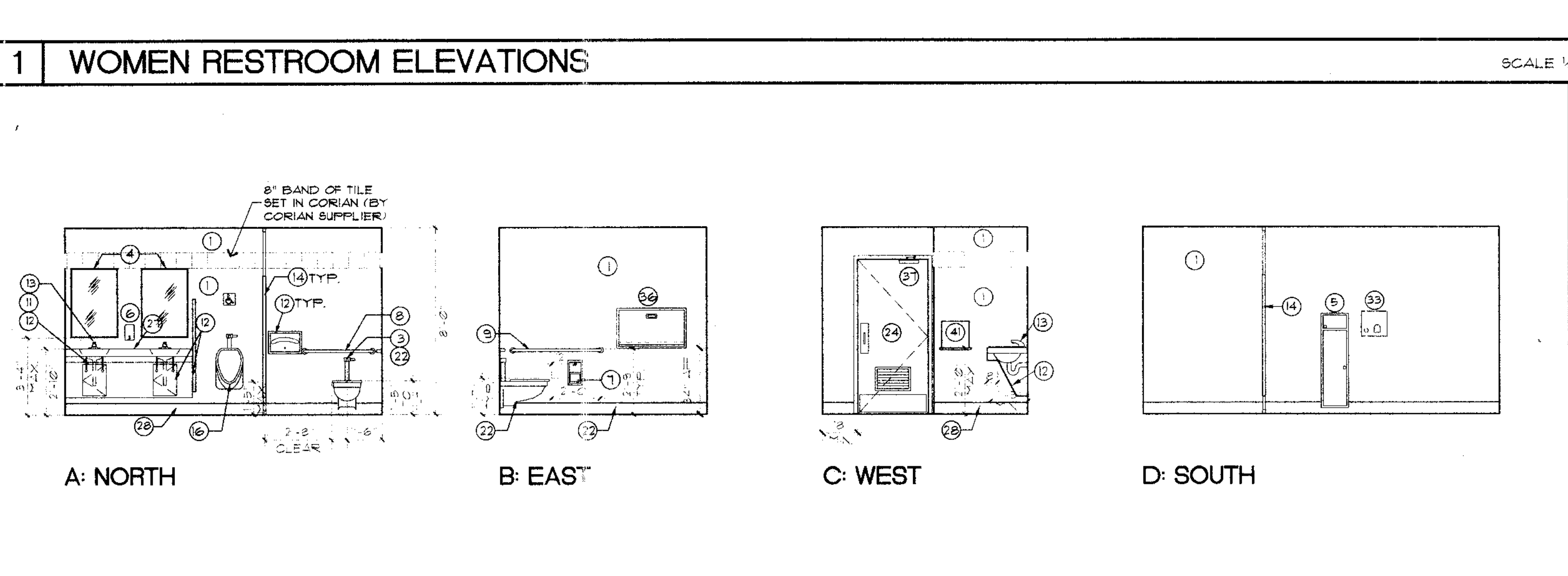
REVISED & PRINTED 05/26/99
FLOOR PLAN, REF. CLG. PLAN & PLUMBING PLAN

Date	Revision	Date	By
8/10/98			
Drawn	▲		
Checked	▲		
Project	▲		
98-346	▲		
Sheet:	A-2.1		
Of - Sheets	1		

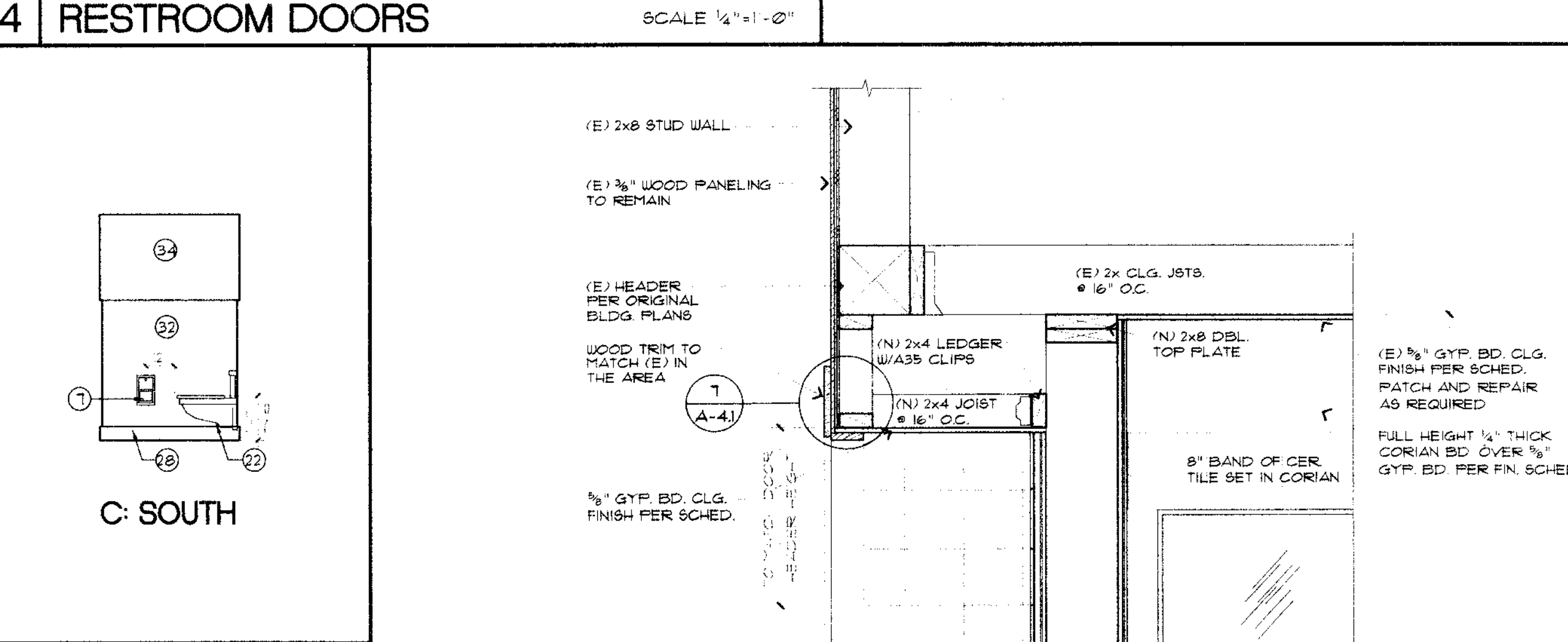
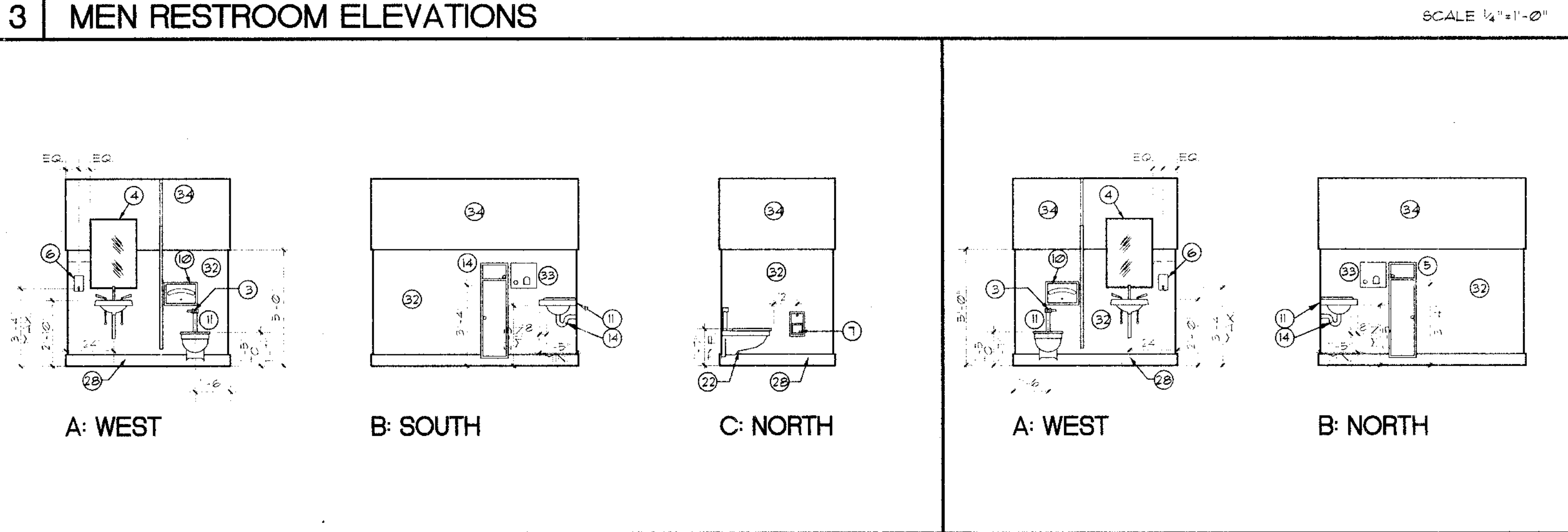
This document and the information contained herein are the property of Lieb & Miller Architecture and Planning. Unauthorized use, copying, disclosure or publication by any method is prohibited without the written approval of Lieb & Miller Architecture and Planning.



- KEY NOTES**
- FULL HEIGHT 1/2" THICK CORIAN BOARD OVER 3/8" GYP. BD. SOLID BACKING PER FIN. SCHED.
 - GENDER SPECIFIC ACCESSIBLE SIGN CENTER ON DOOR SEE 4-HC-1.
 - BATTERY POWERED, SENSOR OPERATED TOILET/URNAL FLUSHOMETER, 16 GAL/MIN. MAX.
 - 2'-0" x 3'-0" MIRROR W/ STAINLESS STEEL EDGES, PROVIDE 1" RUBBER SHIMS BEHIND TOP MOUNTING LOCATIONS.
 - RECESSED WASTE RECEPTACLE: MOUNT SUCH THAT ALL OPERATIONS ARE AT 3'-4" AFF. MAX.
 - RECESSED SOAP DISPENSER: MOUNT SUCH THAT ALL OPERATIONS ARE AT 3'-4" AFF. MAX.
 - RECESSED TOILET TISSUE DISPENSER: DOUBLE ROLL UNIT.
 - GRAB BAR: 1 1/2" RD. x 36" LONG. SEE SPECS.
 - GRAB BAR: 1 1/2" RD. x 42" LONG. SEE SPECS.
 - TOILET SEAT COVER DISPENSER: RECESSED MOUNTED. SEE SPECIFICATIONS.
 - PROVIDE FIXTURE CARRIER FOR WALL MOUNTED FIXTURE AT THIS LOCATION. SEE SPECS.
 - PROVIDE LAMINATED PLASTIC ON PLYWOOD COVER W/ BLIND DOOR UNDER LAVATORIES AND ON SIDE, 1/4" FROM TOILET / URINAL PARTITION. USE STANDARD COLORS AND FINISHES. SEE INTERIOR ELEVATIONS AND DETAIL 2 / A-41.
 - HANDS FREE, SENSOR ACTIVATED ELECTRONIC FAUCET, 0.5 GAL/MIN. SEE SPECS.
 - HIGH PRESSURE PHENOLIC UC COMPARTMENT PARTITION, PER SPECS, 6" HEAD 4 3/4" MIN. BOTTOM WALL, 4 CEILING SUPPORTED. PROVIDE 2X BLKG. AT WALL AND CLG. SUPPORT.
 - HIGH PRESSURE PHENOLIC URINAL PARTITION PER SPECS, 60" HIGH 12" FROM FLOOR 4 24" DEEP WALL, FLOOR & CEILING SUPPORTED. PROVIDE 2X BLKG. AT SUPPORTS.
 - ACCESSIBLE URINAL SEE FIXTURE SCHEDULE, NOTES ON SHEET HC-1 & SPECIFICATIONS. LIP EXTENSION OF 1/4" MIN. FROM WALL.
 - 6" SQ. INTERNATIONAL SYMBOL OF ACCESSIBILITY PER 514C-1. + 36" AFF.



20. SIGN AS PER NOTES ON SHEET HC-1 STATING 'ROOM TYPE (MEN-WOMEN & BRAILLE SYMBOLS)'. MOUNT WITHIN 3' OF STRIKE SIDE OF DOOR.
 21. STAINLESS STEEL COAT HOOK ON INSIDE OF COMPARTMENT DOOR @ 48" AFF.
 22. ACCESSIBLE WATER CLOSET. SEE FIXTURE SCHEDULE, NOTES ON SHEET HC-1 & SPECIFICATIONS.
 23. REGULAR WATER CLOSET. SEE FIXTURE SCHEDULE, & SPECIFICATIONS.
 24. REPLACE (E) DOORS, DOOR CLOSERS AND HARDWARE. RETAIN, REFURBISH AND REUSE PULL AND PUSH PLATES, DOOR STOPS, LOUVERS, KICK PLATES, HINGES AND STRIKES. FINISH NEW DOORS TO MATCH (E) (VERTICAL GRAIN D.F.). PLASTIC LAMINATE INSIDE FACE OF DOORS IN MEN AND WOMEN'S RESTROOMS. FINISH PER DOOR SCHEDULE.
 25. U-SHAPED PULL HANDLE @ EACH SIDE OF DOOR 4 SLIDING PRIVACY LATCH @ INSIDE.
 26. DOOR W/ CLOSER 5 lbs. ON A 34" CLR. OPENING DOOR W/ BOTTOM OF DOOR @ 18" MIN. AFF.
 27. INTEGRAL 1/2" THICK CORIAN LAVATORY AND COUNTERTOP.
 28. 6" CERAMIC TILE COVED BASEBOARD PER FIN. SCHEDULE.
 29. (E) WOOD PANELING TO REMAIN. PATCH AND REPAIR DAMAGED BOARDS / PANELS AS NECESSARY DUE TO REMODEL.
 30. BARRIER FREE DRINKING FOUNTAIN, (NON REFRIGERATED WATER). MOUNTING HEIGHT PER INT. ELEV. 2 / A-31.
 31. HANDICAP ACCESSIBLE, WALL MOUNTED, (NON REFRIGERATED WATER) DRINKING FOUNTAIN. INSTALL PER FIN. RECOMMENDATIONS. SEE ELEVATIONS 2 & 3 / A-31 & HC NOTES FOR INSTALLATION HT.
 32. 5'-0" HI. CERAMIC TILE WAINSCOT, THIN SET OVER 3/8" GYP. BD. SOLID BACKING PER FIN. SCHED.
 33. RECESSED STAINLESS STEEL, AUTO SENSOR HAND DRYER. INSTALL PER FIN. RECS. MOUNT SUCH THAT ALL OPERATIONS ARE AT 3'-4" AFF. MAX.
 34. SMOOTH SURFACED GYPSUM BOARD. PER FIN. SCHEDULE.
 35. FULL HEIGHT 6x6 SMOOTH TILE WAINSCOT OVER GIBBERITIOUS BACKER BOARD OVER 3/8" GYP. BD.
 36. STAINLESS STEEL, RECESSED MOUNTED, BABY CHANGING TABLE. INSTALL PER FIN. RECS. AND PER DETAIL 5 / A-41.
 37. PROVIDE DOOR CLOSER. MAXIMUM EFFORT TO OPERATE DOOR SHALL NOT EXCEED 5 LBS. PER USC 11932.51.
 38. REFURBISH AND REUSE (E) KICK-PLATE, BOTH SIDES OF DOOR.
 39. REPLACE (E) DOOR KNOB WITH ADA COMPLIANT LEVER SET. LOCKSETS AND HARDWARE FINISH TO MATCH EXISTING.
 40. (E) DOORS IN CHILDREN'S RESTROOM TO BE RETAINED.
 41. 14"x14"x8 1/2" DEEP BUILT IN BOOK SHELF, FINISH W/ 1/4" THICK CORIAN. SEE DETAIL 11/A-41.
- NOTE: ALL FLANGES & EDGES OF ALL RECESSED ACCESSORIES TO BE SET IN A BEAD OF CAULKING.



TILE SCHEDULE

ROOM	LOCATION	TILE SIZE	TILE MANUF.	TYPE/STYLE	TILE COLOR	SETTING METHOD	REMARKS
WOMEN'S (ADULT) REST ROOM	FLOOR	12" X 12"	CROSSVILLE	CVA-V-22	CHAMBERLAIN	THIN SET METHOD F122-99	
	COVE BASE	6" X 6"	CROSSVILLE	CVA-238	SHE TLAND	THIN SET METHOD F122-99	
	WALL TRIM	6" X 6"	DECO TRIM	LFCV 650 B		THIN SET METHOD F122-99	
	WALL (SEE CORIAN SPECS)						
MENS (ADULT) REST ROOM	FLOOR	12" X 12"	CROSSVILLE	P.T. MINYA PASTORALE		THIN SET METHOD F122-99	
	COVE BASE	6" OR 8"	CROSSVILLE	CVA 878	TRUFFLE	THIN SET METHOD F122-99	
	WALL TRIM	6" X 6"	DECO TRIM	LFCV 650 B		THIN SET METHOD F122-99	
	WALL (SEE CORIAN SPECS)						
DRINKING FOUNTAIN ALCOVE	FLOOR	6" X 6"	COLISEUM ROSSLF	352 445		THIN SET METHOD F122-99	
	COVE BASE	6" X 6"	COLISEUM ROSSLF	352 445		THIN SET METHOD F122-99	
	WALL TRIM	6" X 6"	WVA			THIN SET METHOD F122-99	
	WALL	6" X 6"	COLISEUM ROSSLF	352 445		THIN SET METHOD F122-99	
GIRLS (CHILDRENS) REST ROOM	FLOOR	3" X 3"	CROSSVILLE	A 533	OPAL	THIN SET METHOD F122-99	
	COVE BASE	(MATCH FLOOR)				THIN SET METHOD F122-99	
	WAINSCOT AT WALL	4" X 4"	CROSSVILLE	A 630	BUFF TAUPE	THIN SET METHOD F122-99	
	WALL						
BOYS (CHILDRENS) REST ROOM	FLOOR	3" X 3"	CROSSVILLE	LVA 418-UPS	GREEN	THIN SET METHOD F122-99	
	COVE BASE	(MATCH FLOOR)				THIN SET METHOD F122-99	
	WAINSCOT AT WALL	4" X 4"	SACRAMENTO	UCUJ 714	SEAFOAM	THIN SET METHOD F122-99	
	WALL						

NOTES:
1. ALL COLORS ARE LISTED AS AVAILABLE BY MANUFACTURER REPRESENTED AND ARE NOT CUSTOM ITEMS.
2. SEE SPECS FOR GROUT MANUFACTURER, TYPE, COLOR & JOINT WIDTH.

PAINT SCHEDULE
'DUNN EDWARDS' OR APPROVED EQUAL PAINT FROM TECHNICAL SPECS. OF FINISHING

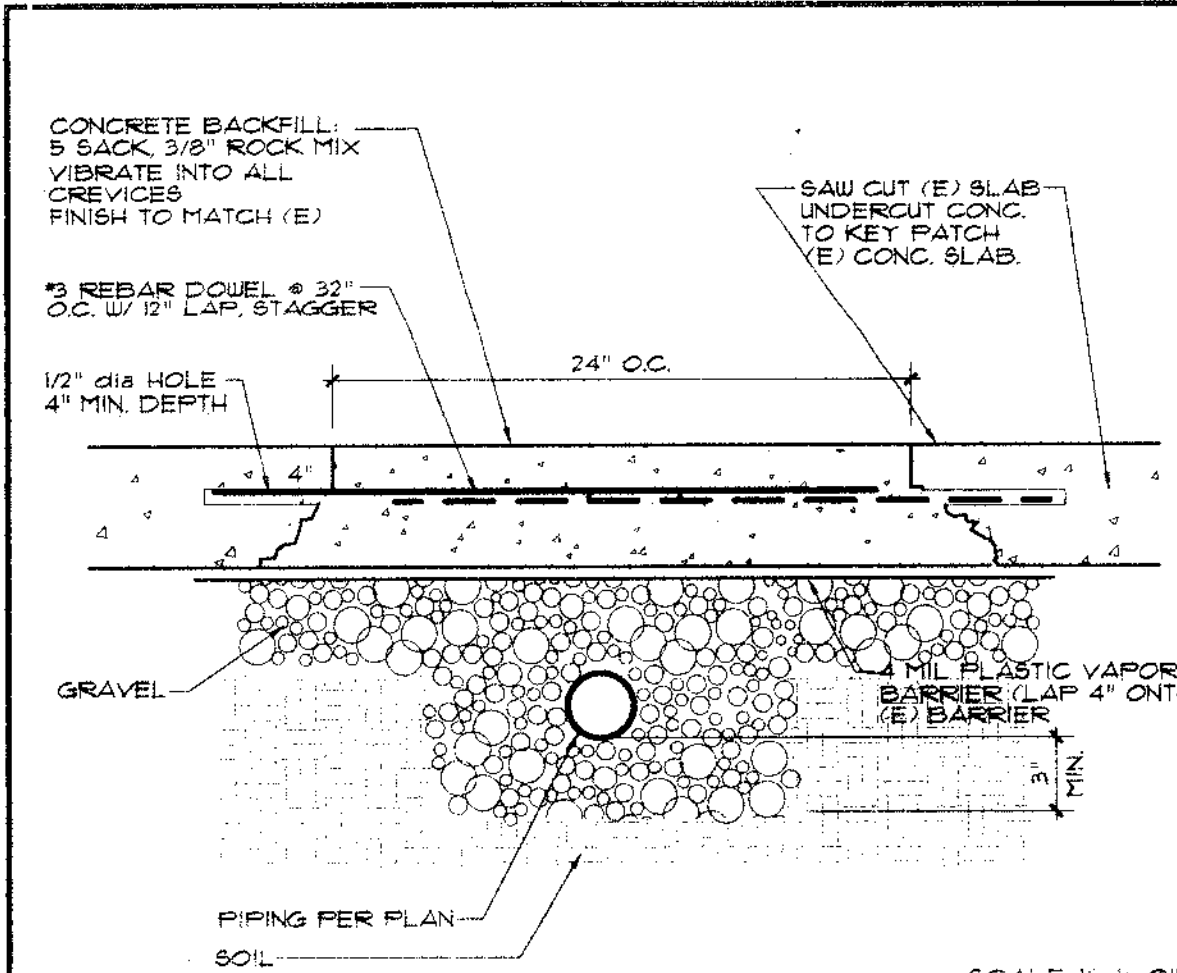
CHILDREN'S RESTROOMS AND FOYER AREA
GYP. BD. PAINT: 'DUNN EDWARDS':
FIRST COAT: ALKYLSEAL (E-28-1)
SECOND COAT: SUPER U-365 (E-22-1)
THIRD COAT: PRACTICAL SYNTHETIC (E-12)

CHILDREN'S RESTROOM DOORS & WOMEN'S & MEN'S EXT. SIDE OF DOORS (SIDE FACING FOYER)
EPOXY GLOSS: 'DUNN EDWARDS':
FIRST COAT: UNIKOTE (U-101)
SECOND COAT: CERA GLAZE (IP-155)
THIRD COAT: CERA GLAZE (IP-155)

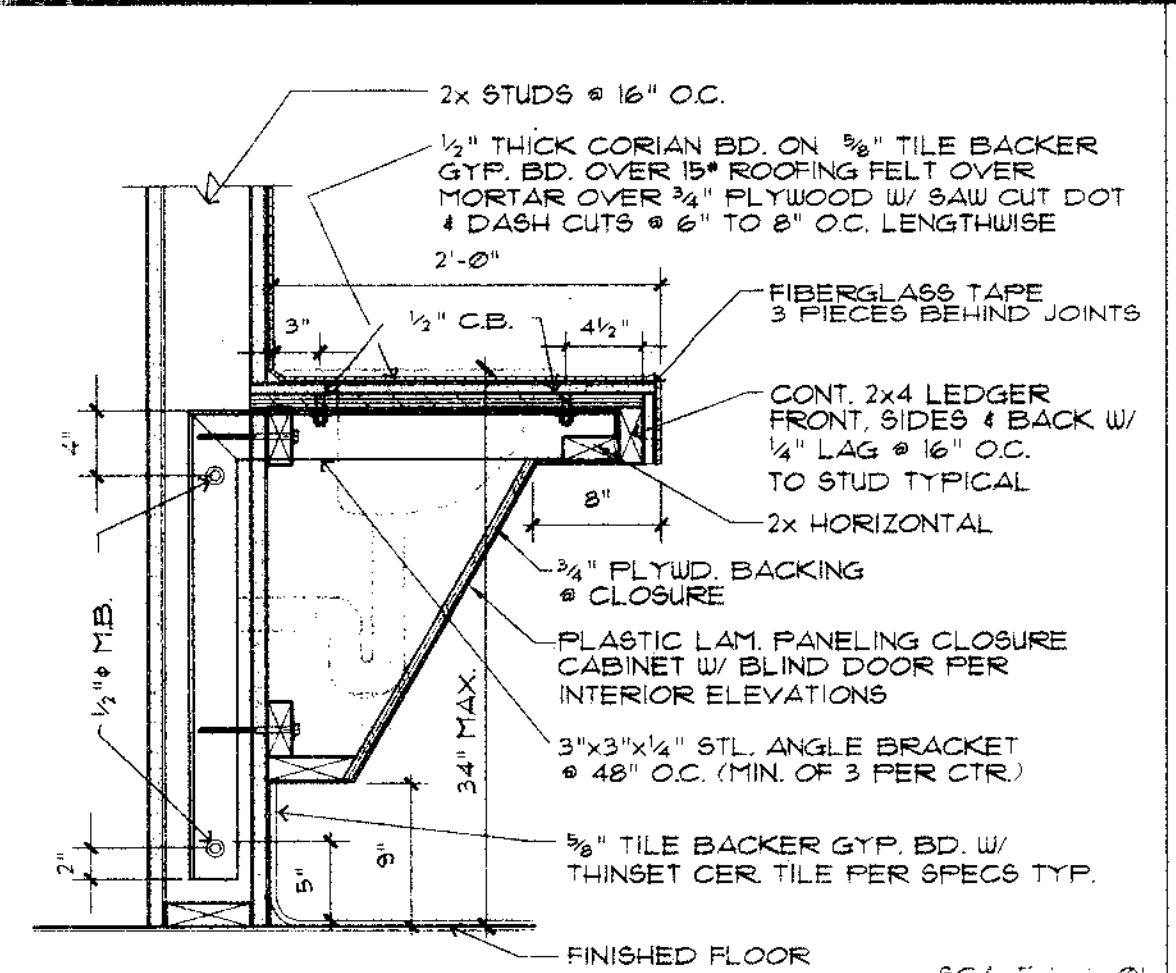
WOMEN'S & MEN'S RESTROOM CEILING
EPOXY GLOSS: 'DUNN EDWARDS':
FIRST COAT: VINYLASTIC (U-101)
SECOND COAT: CERA GLAZE (IP-155)
THIRD COAT: CERA GLAZE (IP-155)

- (E) 2x8 STUD WALL
- (E) 3/4" WOOD PANELING TO REMAIN
- (E) HEADER PER ORIGINAL BLDG. PLANS
- WOOD TRIM TO MATCH (E) IN THE AREA
- 6x6 CERAMIC TILE THIN SET OVER BACKER BOARD OVER 3/8" GYP. BD.
- VERT. GRAIN D.F. WOOD BASE SURF TO MATCH AND ALIGN W/ (E)
- (N) SLIPPERY RESISTANT CERAMIC TILE FLOOR. SEE PLAN FOR EXTENTS. MATCH FLOOR LEVEL.
- (E) BRICK PAVERS TO REMAIN
- (E) 2x CLG. JOIST @ 16" O.C.
- (N) 2x4 LEDGER W/A35 CLIPS
- (N) 2x4 JOIST @ 16" O.C.
- (E) 1/2" GYP. BD. CLG. FINISH PER SCHED. PATCH AND REPAIR AS REQUIRED
- 8" BAND OF CER. TILE SET IN CORIAN
- (E) 2x8 DBL. TOP PLATE
- (E) CONG. SLAB
- PTDF SOLE PLATE L ATTACH TO (E) CONG. SLAB W/ #10 FOUDEIR DRIVEN FASTENERS @ 48" O.C.

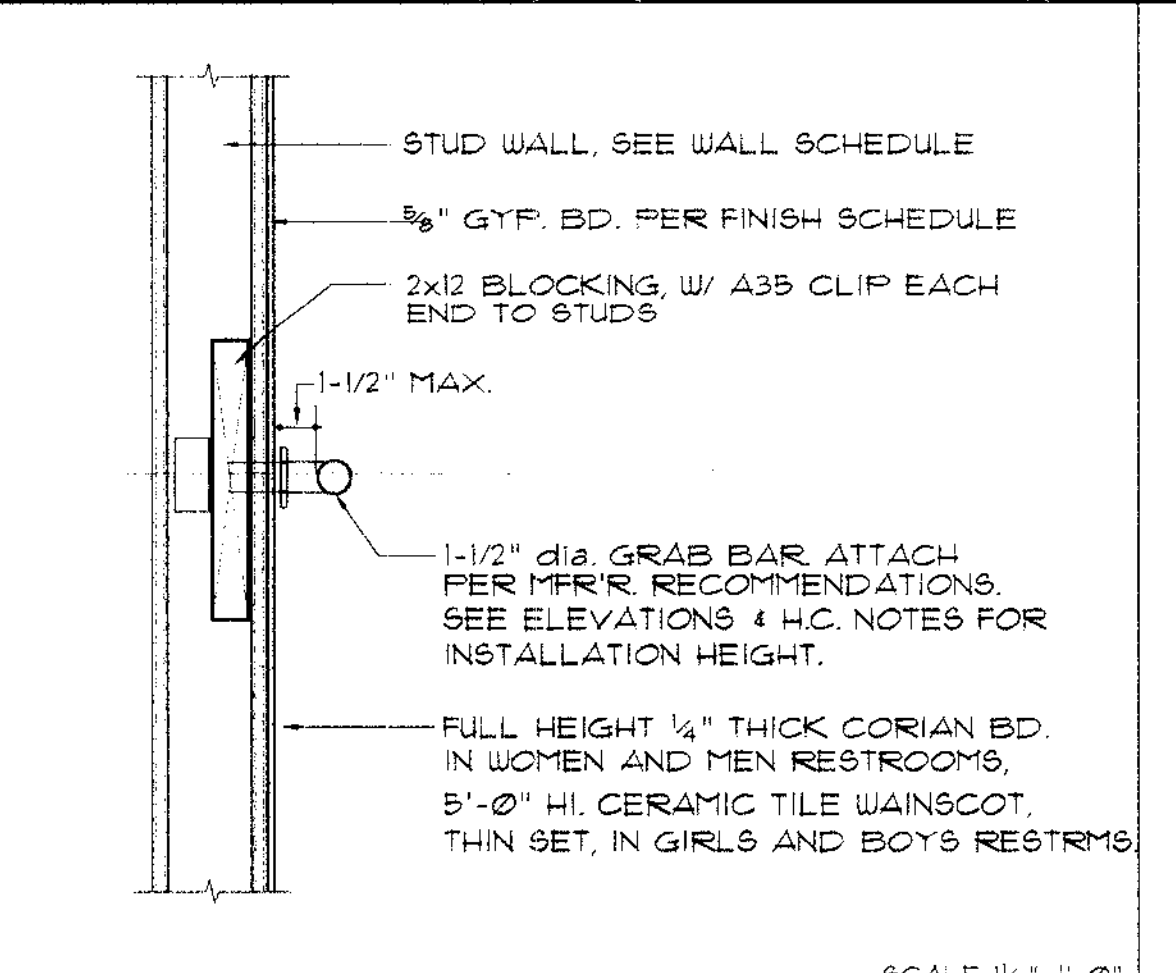
This document and the information contained herein are the property of Lieb & Miller Architecture and Planning. Unauthorized use, copying, disclosure or publication by any method is prohibited without the written approval of Lieb & Miller Architecture and Planning.



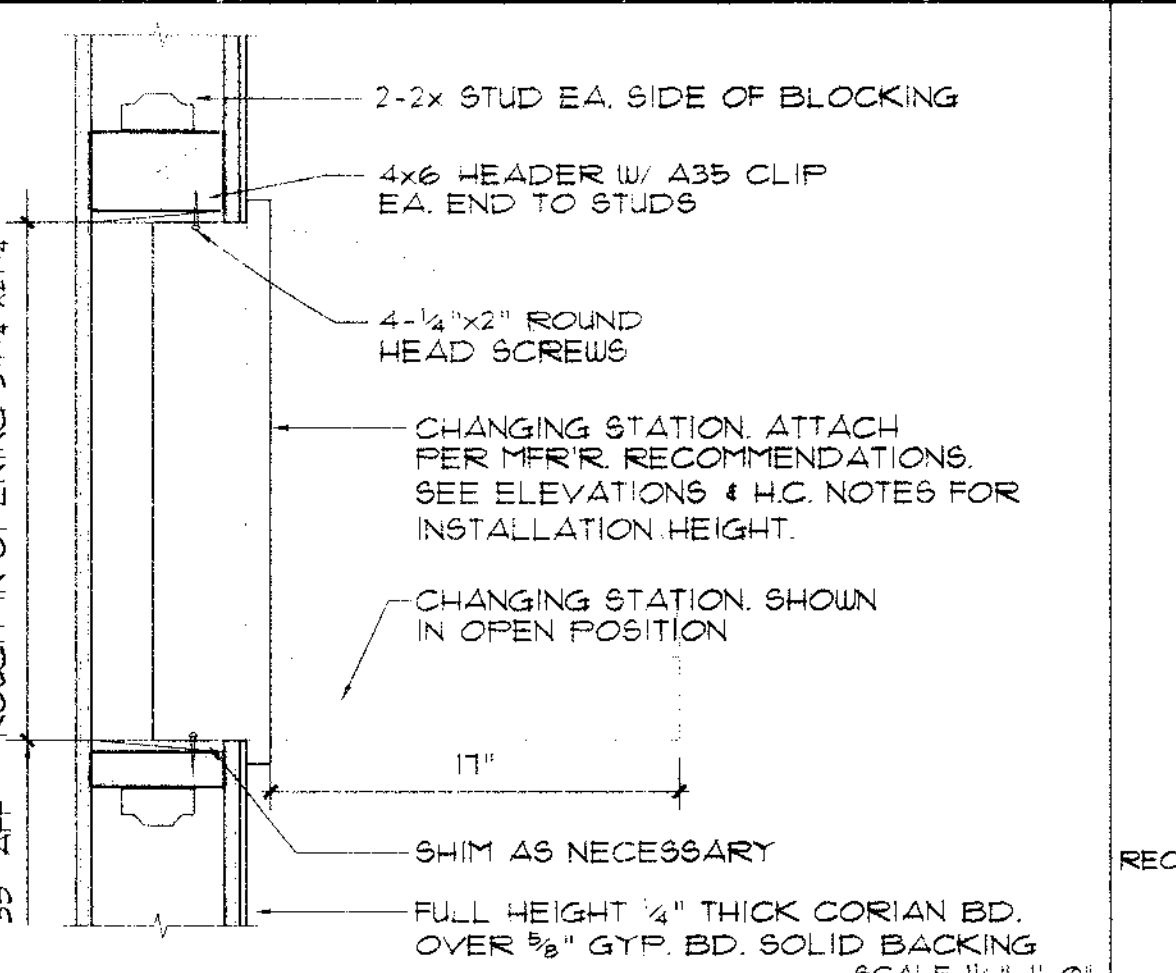
1 PIPING TRENCH DETAIL
SCALE 1/2"=1'-0"
S12-503-346



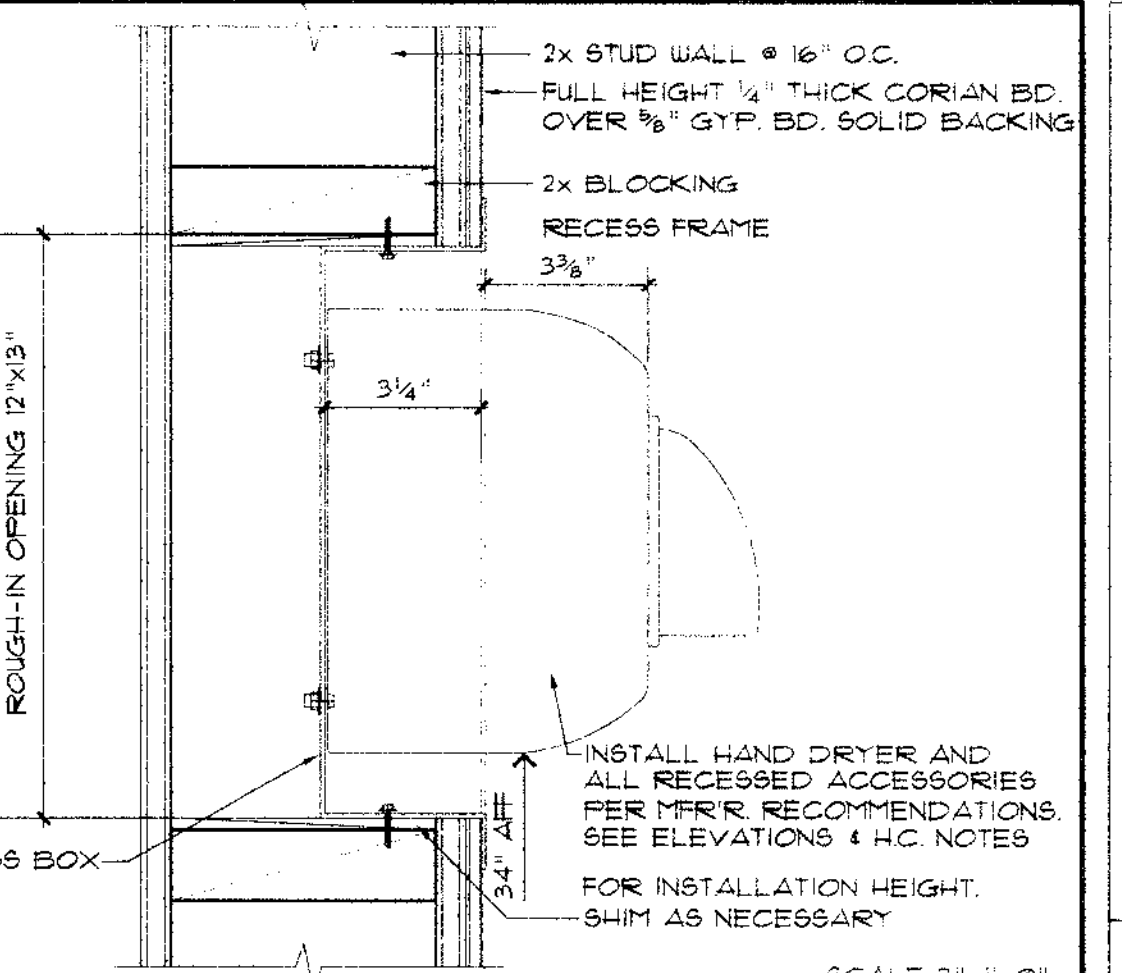
2 VANITY TOP
SCALE 1/2"=1'-0"
S12-503-346



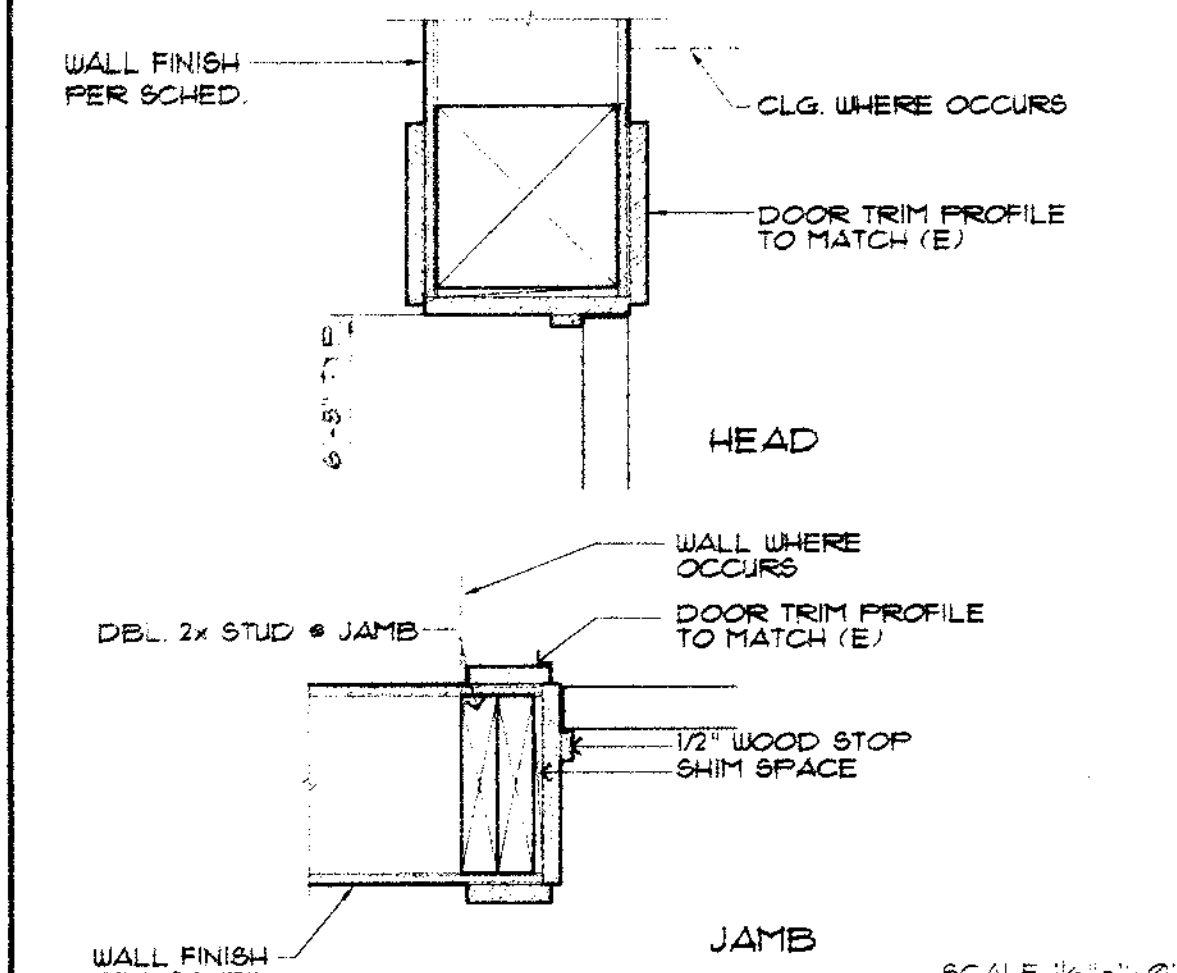
3 GRAB BAR BLOCKING
SCALE 1/2"=1'-0"
S12-503-346



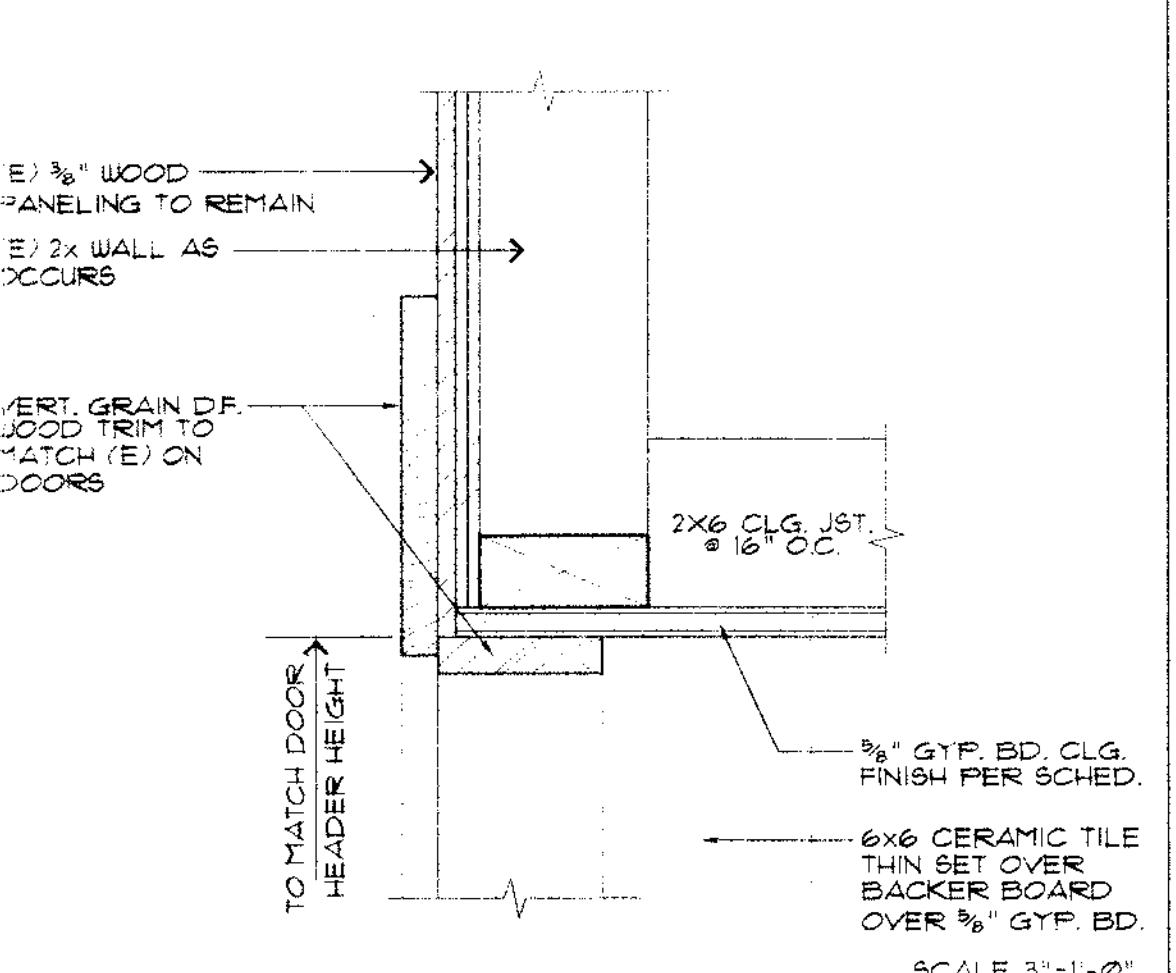
4 CHANGING STATION BLOCKING
SCALE 1/2"=1'-0"
S12-503-346



5 HAND DRYER BLOCKING
SCALE 3/4"=1'-0"
S12-503-346



6 TYPICAL INTERIOR DOOR
SCALE 1/2"=1'-0"
S12-503-346



7 WOOD TRIM AT ALCOVE
SCALE 3/4"=1'-0"
S12-503-346

NAILS SHALL NOT BE DRIVEN CLOSER TOGETHER THAN 1/2 THEIR LENGTH NOR CLOSER TO THE EDGE OF MEMBER THAN 1/4 THEIR LENGTH. NAILING NOT NOTED BELOW OR ON PLANS SHALL BE A MINIMUM OF 2 NAILS AT EACH CONTACT, 8d FOR 1x AND 16d FOR 2x MATERIAL.

JOIST OR RAFTERS AT ALL BEARING - TOE NAIL	3-10d
JOIST OR RAFTERS TO SIDES OF STUD:	
2x8 MEMBER OR SHALLOWER	3-16d
FOR EACH ADDITIONAL FOUR (4) INCHES IN DEPTH	1-16d
DOUBLED JOISTS, RAFTERS, AND HEADERS	2-16d AT 12" O.C.
BLOCKING BETWEEN JOIST OR RAFTERS:	
TO JOIST OR RAFTERS - TOE NAILS, EACH SIDE, EACH END	2-10d
TO JOIST OR RAFTER BEARINGS - TOE NAILS, EACH SIDE	2-10d
BLOCKING BETWEEN STUDS, TOE NAILS, EACH END	2-10d
BUILT-UP CORNER STUDS	16d AT 12" O.C.
2" SUBFLOOR TO JOIST OR GIRDER, BLIND AND FACE NAIL	16d AT 16" O.C.
TOP PLATE OR SOLE PLATE TO STUD, END NAIL	2-16d AT 2x4, 3-16d AT 2x6
TOE NAIL	4-8d
DOUBLED STUDS, FACE NAIL	16d AT 12" O.C.
DOUBLED TOP PLATES, FACE NAIL	2-16d AT 16" O.C.
TOP PLATES, LAPS (4"-0" MINIMUM), FACE NAIL	12-16d
BLOCKING BETWEEN STUDS, INTERSECTIONS, FACE NAIL	2-16d
CONTINUOUS HEADER TO STUD, TOE NAIL	4-8d
CEILING JOIST, LAPS OVER PARTITIONS, FACE NAIL	3-16d
CEILING JOIST TO PARALLEL RAFTERS, FACE NAIL	3-16d
CEILING JOIST LEDGER - FACE NAIL TO STUDS:	
2x4 AND 2x6	2-16d
2x8 AND UP TO 2x12	3-16d
LEDGER TO STUDS:	
2x8 MEMBER OR SHALLOWER	3-16d
FOR EACH ADDITIONAL 2"	1-16d

8 NAILING SCHEDULE
NAIL6CH-346

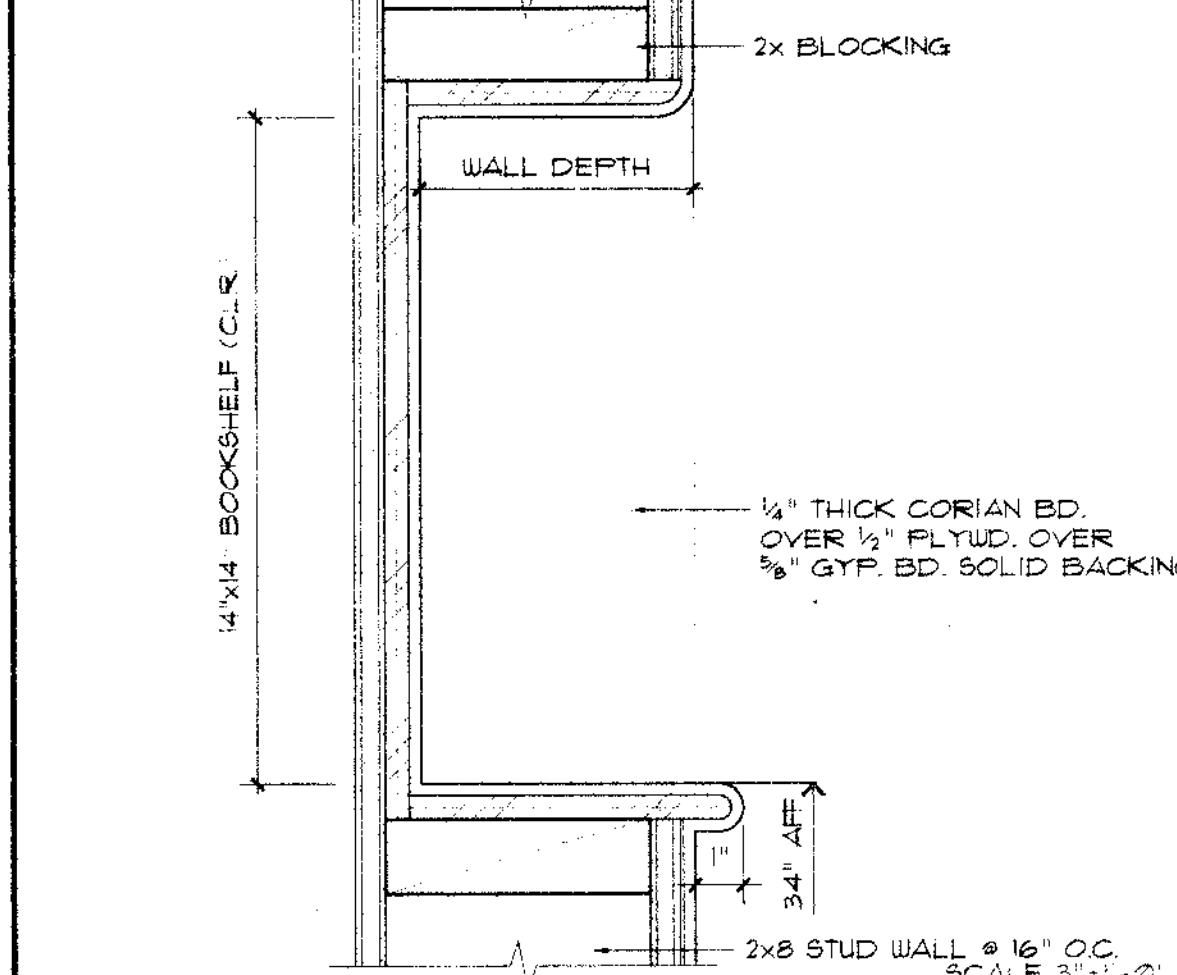
- SAWED FRAMING LUMBER SHALL BE DOUGLAS FIR PER WCLIB WEST COAST LUMBER INSPECTION BUREAU STANDARDS WITH GRADES AS FOLLOWS:
 - BEAMS AND POSTS (4x AND LARGER) #1 WITH 19% MAX. MOISTURE CONTENT AT TIME OF CONSTRUCTION.
 - JOISTS, RAFTERS, PLATES AND STUDS, #2 OR BETTER STAMPED "S-DRY" (SURFACED DRY).
 - OTHER GRADE REQUIREMENTS ARE AS NOTED ON THE DRAWINGS.
- NAILS SHALL BE COMMON WIRE WHERE NAILING IS SPECIFIED ON THE DRAWINGS, OTHERWISE BOX NAILS MAY BE USED PER NAILING SCHEDULE. NAILS USED IN EXTERIOR APPLICATIONS SHALL BE HOT DIPPED GALVANIZED.
- REPLACE SPLIT MEMBERS AND PRE-DRILL HOLES WHERE NAILING MAY CAUSE WOOD TO SPLIT.
- METAL FRAMING CLIPS, HANGERS, ETC. SHALL BE SIMPSON STRONG TIE. NAILING SHALL BE IN ACCORDANCE WITH THE MANUFACTURER'S INSTRUCTIONS WITH A NAIL PROVIDED FOR EACH PUNCHED HOLE. WHERE NAILS ARE TO BE FURNISHED BY THE MANUFACTURER, THEY SHALL BE USED IN PLACE OF COMMON NAILS.
- BOLTS SHALL BE UNFINISHED MACHINE BOLTS OF SIZES SHOWN ON DRAWINGS, CONFORMING TO ASTM A307. LENGTH OF BOLTS SHALL NOT PROJECT LESS THAN 1/16" OR MORE THAN 1/2" BEYOND THE END OF NUT. BOLT HOLES IN WOOD SHALL BE 1/32" MIN. 1/16" MAX. LARGER THAN THE BOLT DIAMETER. PROVIDE STANDARD CUT OR MALLEABLE IRON WASHER UNDER BOLT HEAD AND NUT WHERE THEY WOULD BEAR ON WOOD. NUTS SHALL BE TIGHTENED WHEN PLACED AND RETIGHTENED BEFORE CONCEALMENT.
- LAG BOLTS AND WOOD SCREWS SHALL CONFORM WITH UBC SECTIONS 2337 AND 2339.
- WOOD AGAINST CONCRETE OR CONCRETE BLOCK SHALL BE PRESSURE-TREATED DOUGLAS FIR. WOOD POSTS EMBEDDED IN CONCRETE OR EARTH SHALL BE PRESSURE-TREATED TO THE AWPB LP-22 STANDARD, STAMPED FOR "IN-GROUND USE". TREAT ALL CUT SURFACES, ENDS, AND HOLES IN PRESSURE TREATED MATERIAL PER 1994 UBC SECTION 1811.7.
- STRUCTURAL MEMBERS SHALL NOT BE NOTCHED, CUT OR OTHERWISE ALTERED FOR DUCTS, PIPES, ETC. WITHOUT THE PRIOR APPROVAL OF THE STRUCTURAL ENGINEER.

OPENING WIDTH	BEARING WALL	NON-BEARING WALL
UP TO 8'-0"	4 x 8	4 x 6
8'-0" TO 10'-0"	4 x 10	4 x 8
10'-0" TO 12'-6"	4 x 12	4 x 10
12'-6" TO 15'-0"	4 x 14	4 x 12

SYMBOL	WIDTH	HEIGHT	THICK	TYPE	HC/BC	DR. MAT.	FRAME	TRIM	HWARE	FINISH	GLAZING	REMARKS/NOTES
1	3'-0"	6'-8"	1-3/4"	FLUSH	SC	WOOD	WOOD	WOOD (T.M.E.)	GROUP 1	EPOXY PAINT ON EXT. SIDE OF DOOR (FACING FOYER).	N/A	SEE NOTE #2 KEYS TO MATCH LIBRARY KEY
2	3'-0"	6'-8"	1-3/4"	FLUSH	SC	WOOD	WOOD	WOOD (T.M.E.)	GROUP 1	CLEAR FINISH, PLASTIC LAMINATE ON THE INSIDE FACE.	N/A	SEE NOTE #2 KEYS TO MATCH LIBRARY KEY
3	3'-0"	6'-8"	1-3/4"	FLUSH	SC	WOOD	WOOD	WOOD (T.M.E.)	GROUP 2	CLEAR FINISH, PLASTIC LAMINATE ON THE INSIDE FACE.	N/A	SEE NOTE #2 KEYS TO MATCH LIBRARY KEY
4	(E) 3'-0"	(E) 6'-8"	EXISTING	EXISTING	EXISTING	EXISTING	EXISTING	EXISTING	EXISTING	EPOXY PAINT, CLEAR FINISH BOTH SIDES	N/A	KEYED TO MATCH LIBRARY KEY
5	(E) 3'-0"	(E) 6'-8"	EXISTING	EXISTING	EXISTING	EXISTING	EXISTING	EXISTING	EXISTING	EPOXY PAINT, CLEAR FINISH BOTH SIDES	N/A	KEYED TO MATCH LIBRARY KEY

GROUP	HINGE	LOCK/SET	DEADBOLT	THRESHOLD	CLOSER	KICKPLATE/PULL	STOP
1	STANLEY FB1168 NRP	SCHLAGE	SCHLAGE	B44P	PEMKO ADA COMPLIANT	NORTON 7500 SERIES	EXISTING
2	STANLEY FB1168 NRP	SCHLAGE	DRPP				
3							

NOTES:
1. PROVIDE SIGN ON DOOR PER 4HC-1 & 6" x 6" SIGN AT SIDE OF DOOR PER INTERIOR DOOR ELEVATIONS. SIGN STATES ROOM NAME (WOMEN OR MEN) IN RAISED LETTERS & BRILLE PER SIGNS OF IDENTIFICATION NOTE ON SHEET HC-1.
2. RE-FURISH AND REUSE PULLS, PUSH & KICK PLATES, GRILLES, HINGES, DOOR STOPS AND STRIKES.
3. T.M.E. = TO MATCH EXISTING



11 BOOKSHELF DETAIL
SCALE 3/4"=1'-0"
S12-503-346

12

13

14

15

16

17

18

19

20

RESTROOM REMODEL
PETALUMA PUBLIC LIBRARY
SONOMA CO. LIBRARY
100 FAIRGROUNDS DR.
PETALUMA, CA.

REVISED & PRINTED 05/26/98

ARCHITECTURAL DETAILS

Date	Revision	Date	By
8/10/98			
Drawn	▲		
Checked	▲		
Project	▲		
98-346	▲		
Sheet	▲		

A-4.1

Of _____ Sheets